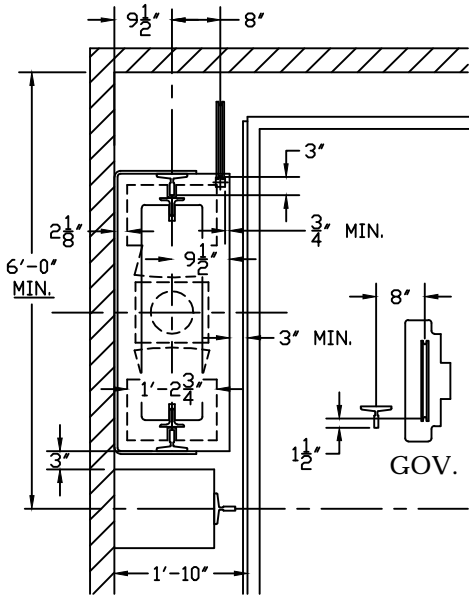


# HOLLISTER-WHITNEY ELEVATOR CORPORATION

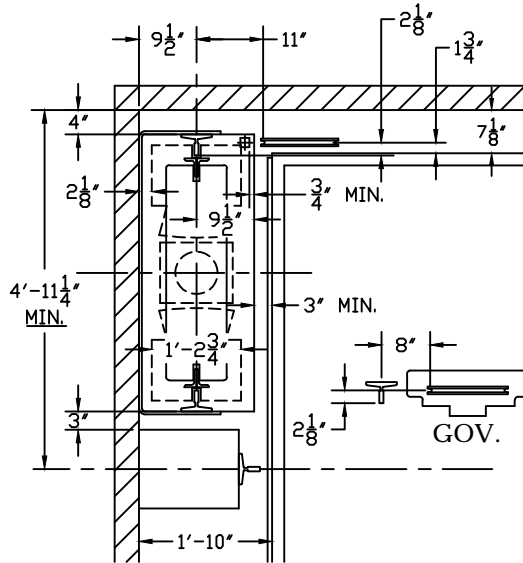
#1 Hollister-Whitney Parkway  
 Quincy, IL 62305  
 Phone: 217-222-0466

Fax: 217-222-0493  
 email: engineering@hollisterwhitney.com  
 www.hollisterwhitney.com

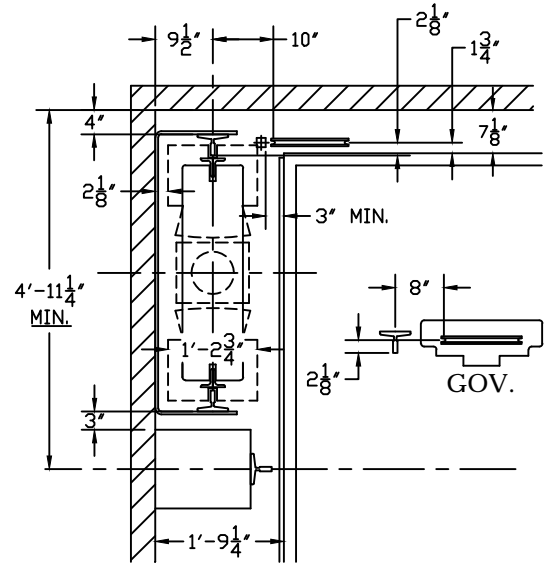
## #480 FGC COUNTERWEIGHT SAFETY STANDARDS FOR SEISMIC ZONES 0 AND 1 ONLY



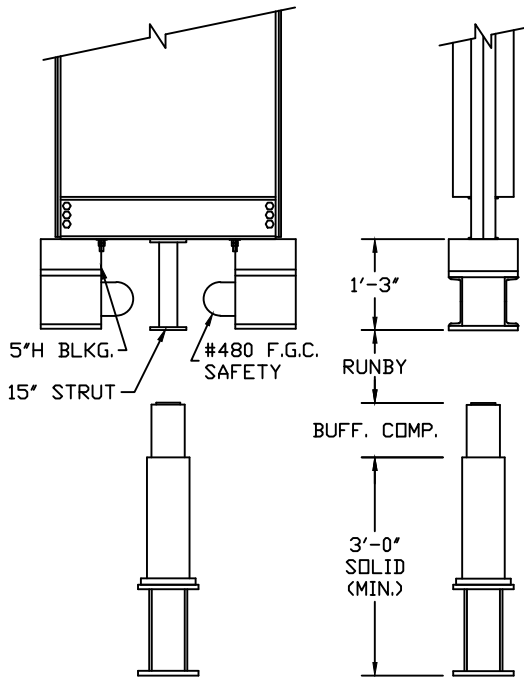
CWT. SAFETY TO THE SIDE  
 WITH CWT. GUARD (LONG PLAT.)



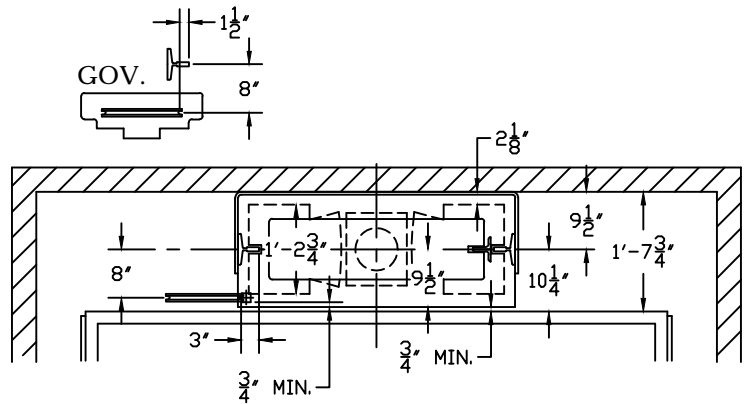
CWT. SAFETY TO THE SIDE  
 WITH CWT. GUARD



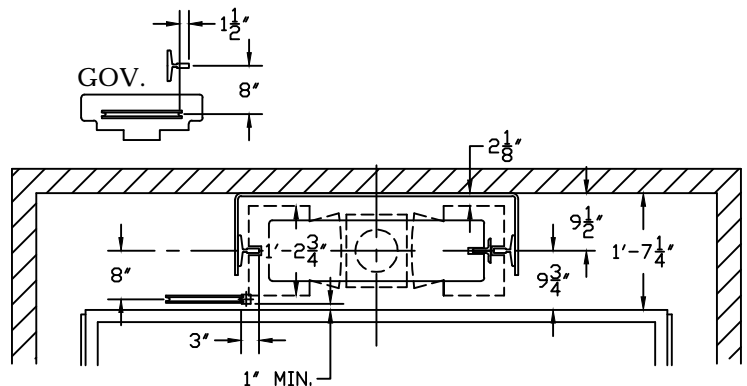
CWT. SAFETY TO THE SIDE  
 WITHOUT CWT. GUARD



NOTE:  
 MINIMUM CWT. D.B.G. WITH SAFETY IS  
 3'-0". A LARGER D.B.G. MAY BE NEEDED  
 WHEN THE JOB HAS COMPENSATION.



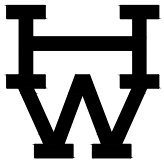
CWT. SAFETY AT THE REAR WITH CWT. GUARD



CWT. SAFETY AT THE REAR WITHOUT CWT. GUARD

(ALL DIAGRAMS SHOWN WITH STANDARD 3'-2 3/4" CWT. D.B.G.  
 AND BASED ON REQUIREMENTS FOR SEISMIC ZONES 0 AND 1)

#E-125-1  
 4-7-2014 klg

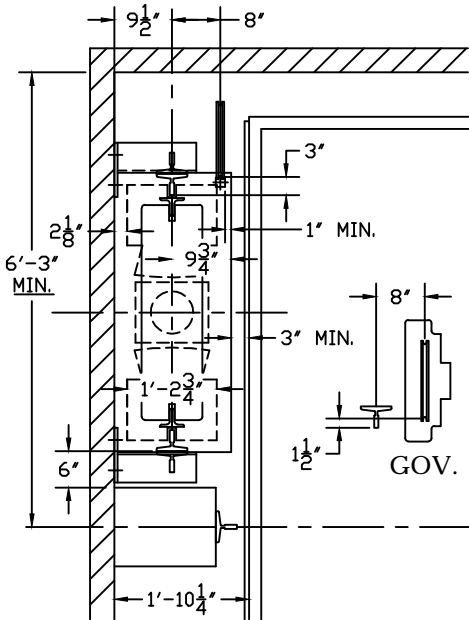


# HOLLISTER-WHITNEY ELEVATOR CORPORATION

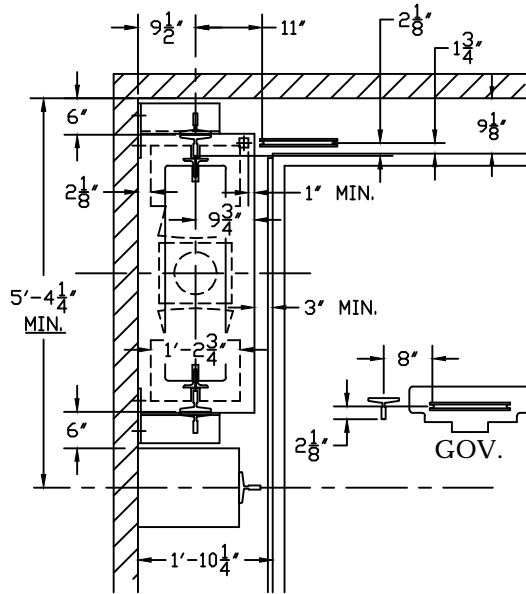
#1 Hollister-Whitney Parkway  
 Quincy, IL 62305  
 Phone: 217-222-0466

Fax: 217-222-0493  
 email: engineering@hollisterwhitney.com  
 www.hollisterwhitney.com

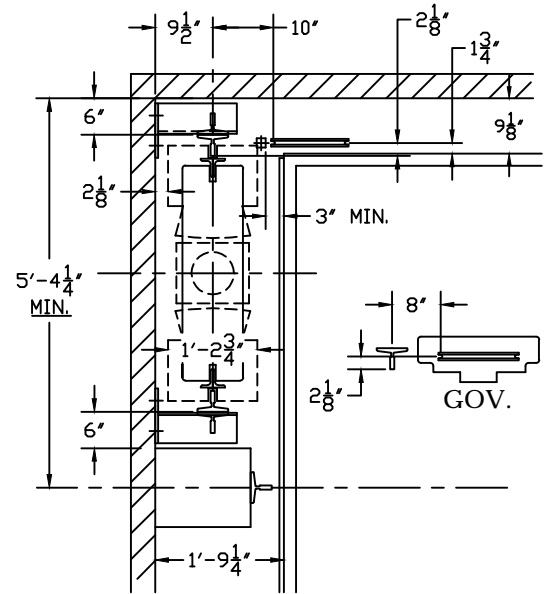
## #480 FGC COUNTERWEIGHT SAFETY STANDARDS FOR SEISMIC ZONE 2 & GREATER



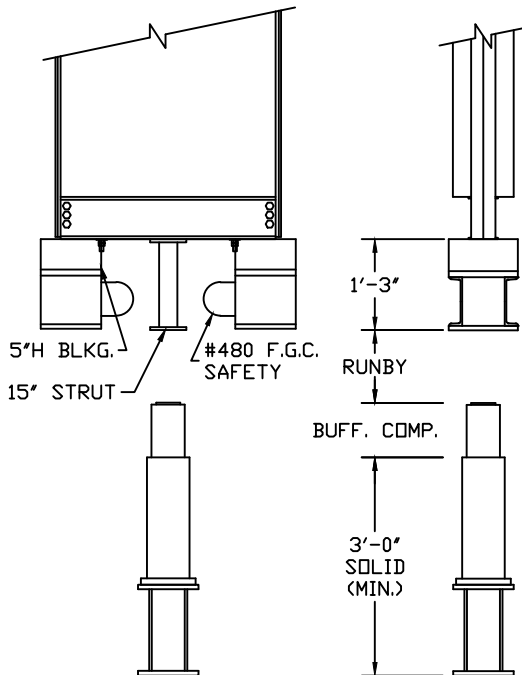
CWT. SAFETY TO THE SIDE  
 WITH CWT. GUARD (LONG PLAT.)



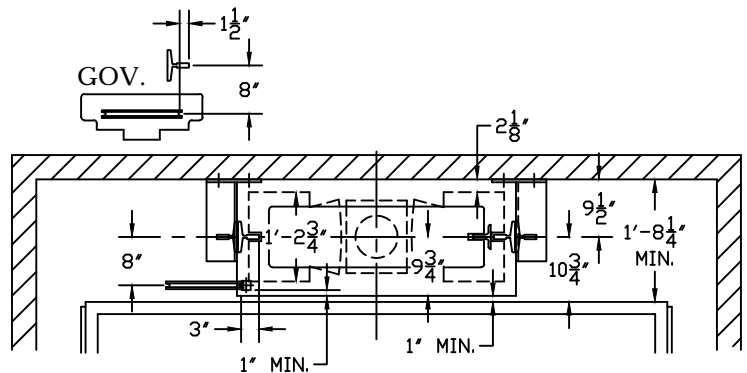
CWT. SAFETY TO THE SIDE  
 WITH CWT. GUARD



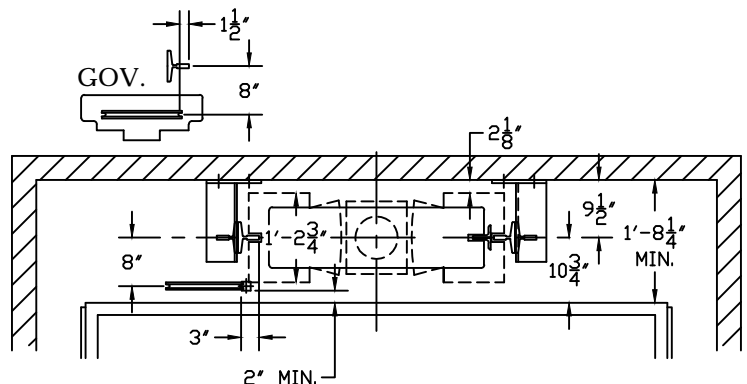
CWT. SAFETY TO THE SIDE  
 WITHOUT CWT. GUARD



NOTE:  
 MINIMUM CWT. D.B.G. WITH SAFETY IS  
 3'-0". A LARGER D.B.G. MAY BE NEEDED  
 WHEN THE JOB HAS COMPENSATION.



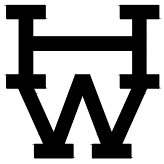
CWT. SAFETY AT THE REAR WITH CWT. GUARD



CWT. SAFETY AT THE REAR WITHOUT CWT. GUARD

(ALL DIAGRAMS SHOWN WITH STANDARD 3'-2 3/4" CWT. D.B.G.  
 AND BASED ON REQUIREMENTS FOR SEISMIC ZONE 2 & GREATER)

#E-125-2  
 4-7-2014 klg



# HOLLISTER-WHITNEY ELEVATOR CORPORATION

#1 Hollister-Whitney Parkway  
Quincy, IL 62305  
Phone: 217-222-0466

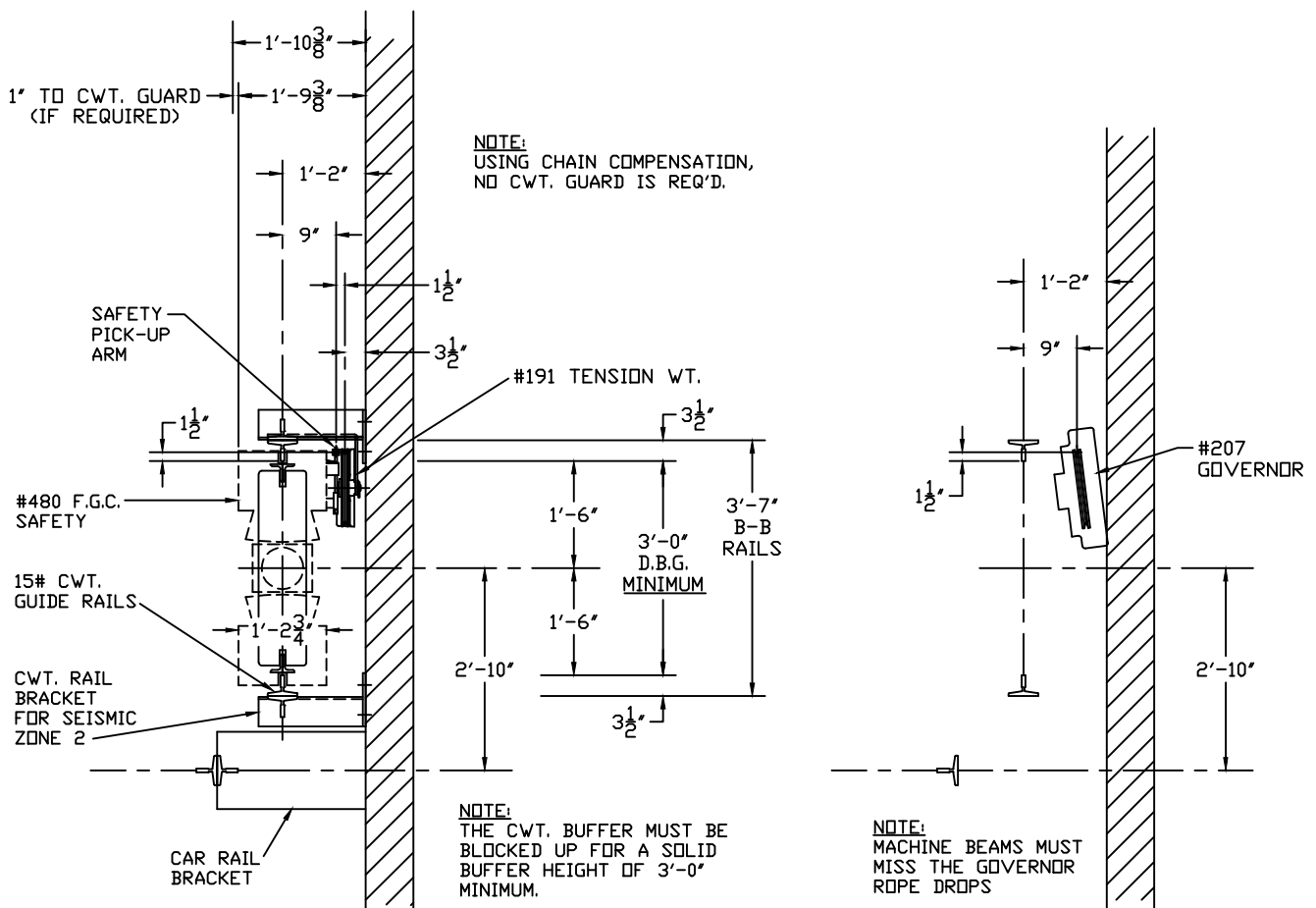
Fax: 217-222-0493  
email: engineering@hollisterwhitney.com  
www.hollisterwhitney.com

## #480 FGC COUNTERWEIGHT SAFETY STANDARDS FOR SEISMIC ZONE 2 & GREATER

### GOVERNOR LOCATION BEHIND THE COUNTERWEIGHT

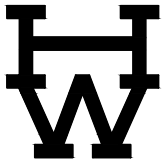
#### USING STANDARD SEISMIC RAIL BRACKET

#### FOR CWT. NOT LOCATED BEHIND THE MAIN RAIL



HOISTWAY

MACHINE ROOM



# HOLLISTER-WHITNEY ELEVATOR CORPORATION

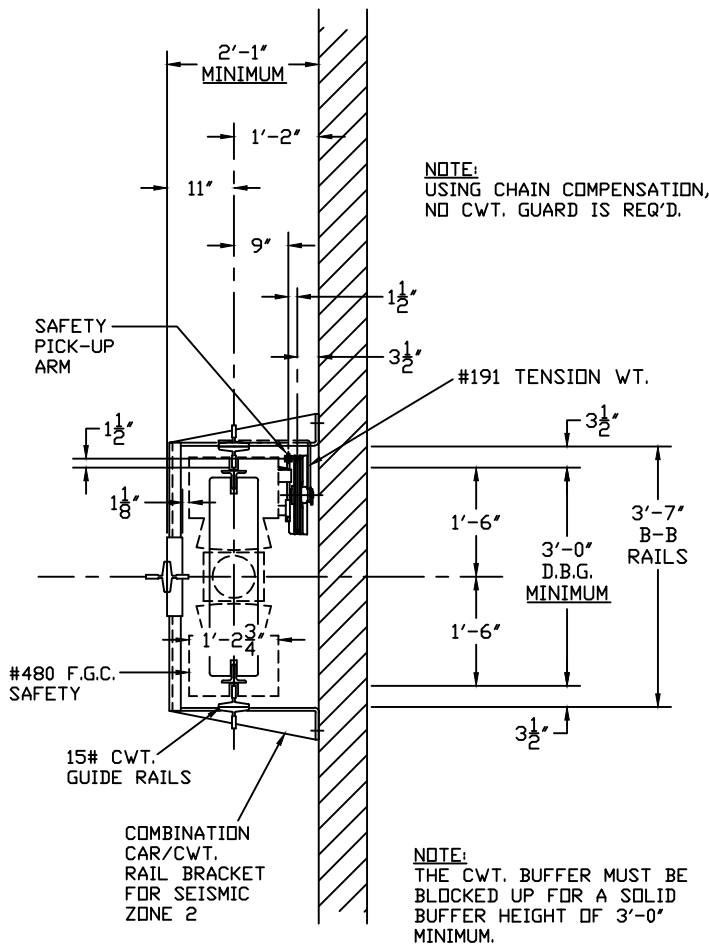
#1 Hollister-Whitney Parkway  
Quincy, IL 62305  
Phone: 217-222-0466

Fax: 217-222-0493  
email: engineering@hollisterwhitney.com  
www. hollisterwhitney.com

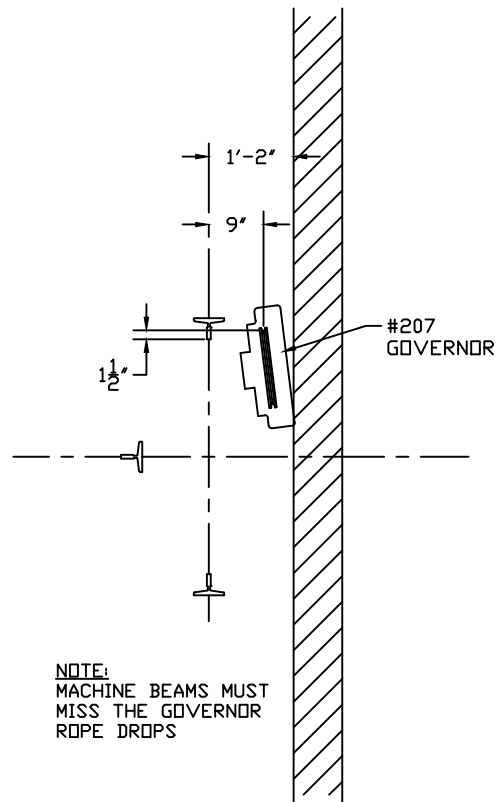
## #480 FGC COUNTERWEIGHT SAFETY STANDARDS FOR SEISMIC ZONE 2 & GREATER

### GOVERNOR LOCATION BEHIND THE COUNTERWEIGHT

### USING COMBINATION STYLE RAIL BRACKET FOR CWT. LOCATED BEHIND THE MAIN RAIL



HOISTWAY



MACHINE ROOM