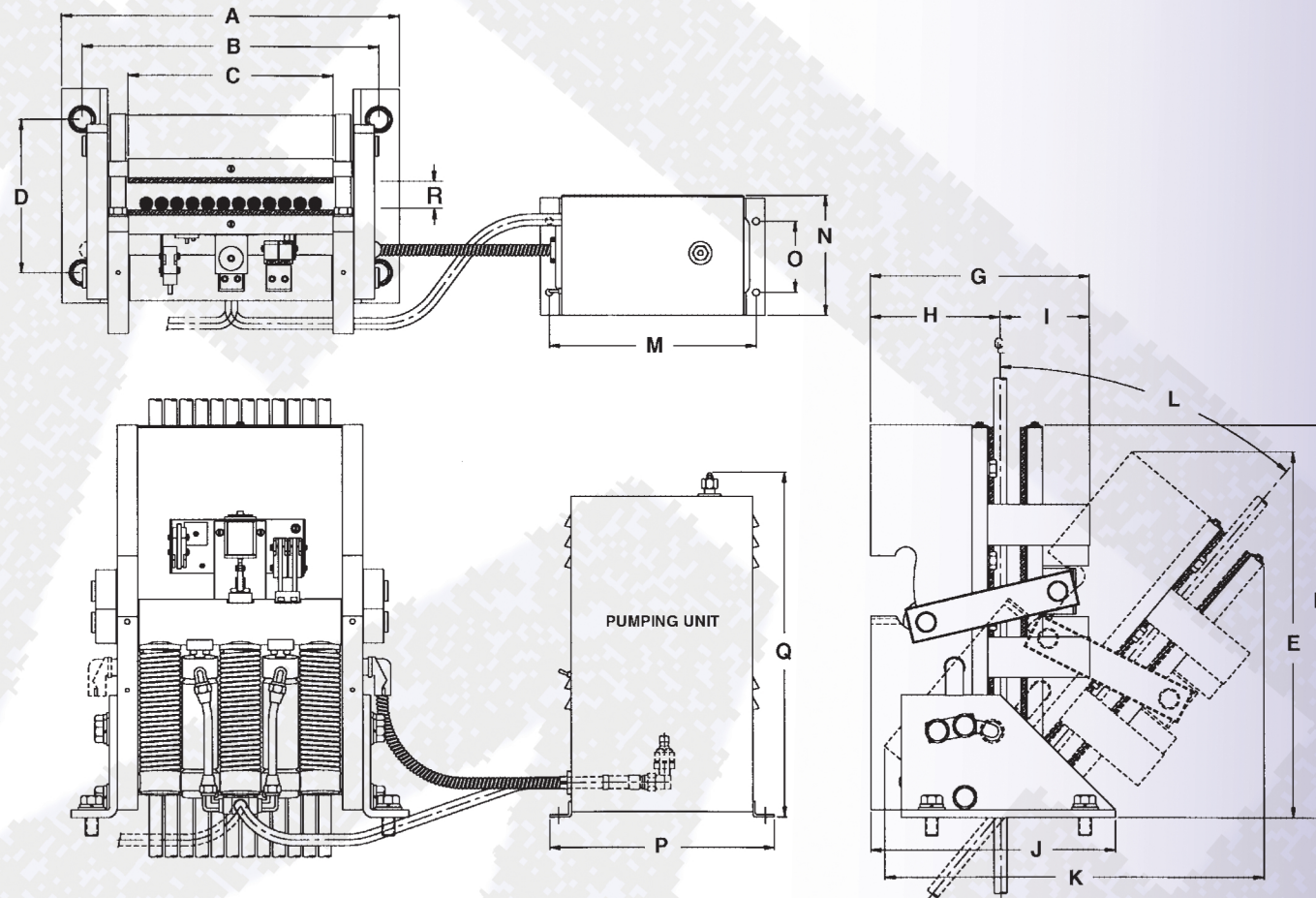
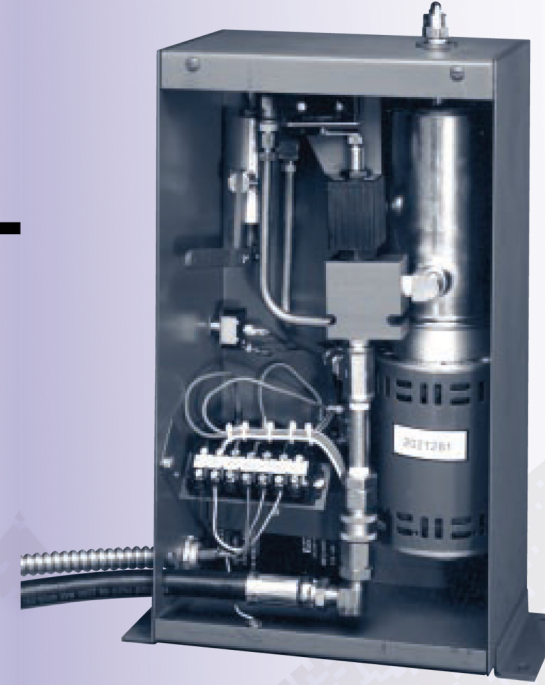


Notes for Models 624, 625 & 626

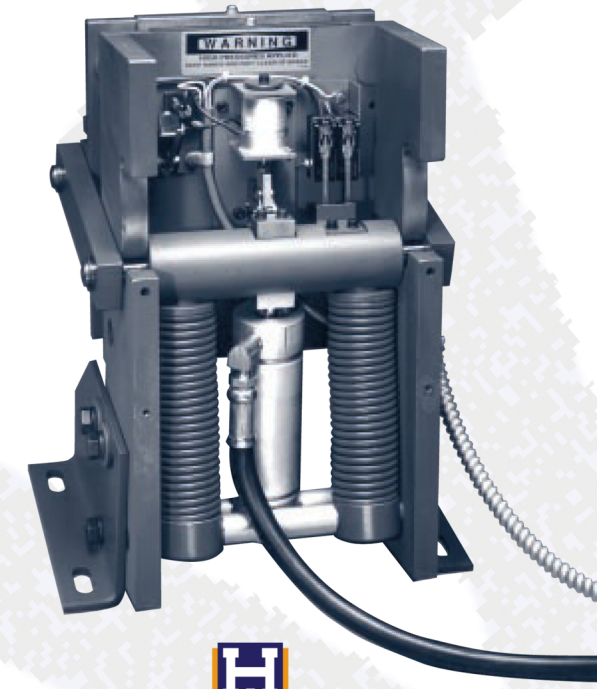
- Models 624 & 625 Rope Gripper® have one less spring and cylinder than Model 626 show below
- Pumping units can be mounted on either side of the Rope Gripper®
- (4) 5/8" bolts are required to mount Rope Gripper® and (4) 1/4" – 20 N.C. bolts to mount pumping unit
- C dimension indicates lining width and maximum outside to outside of hoist ropes
- L dimension is adjustable from 0° to 40°



HOLLISTER-WHITNEY THE ROPE GRIPPER®



In recent years, there has been a great deal of discussion about the need for protection against injuries caused by elevator cars leaving the floor with the doors open and overspeeding in the up direction. That's why Hollister-Whitney introduced the Rope Gripper®, a remarkable device used to grab elevator suspension ropes to stop the elevator in the event of a mechanical or electrical failure. It is imperative that if an elevator overspeeds in the up direction and/or if the elevator leaves the floor with the doors open.



The Rope Gripper® has many unique features, such as a gently applied but powerful 'grip' which doesn't damage the rope or cause any undue stress to the machine or traction sheave, Protection is assured even when slipping traction occurs. The Rope Gripper® provides easy alignment with adequate clearances between the rope and self grooving 'grip' linings and provides power compensation with a constant but powerful force to the rope even as the linings wear. Only four wires are required to the elevator controls and installation is simple. The Rope Gripper® is mechanically activated and hydraulically reset.



Hollister-Whitney
ELEVATOR CORPORATION

#1 Hollister-Whitney Parkway, Quincy, IL 62305
Phone: 217.222.0466
Fax: 217.222.0493
Web: www.hollisterwhitney.com
Email: info@hwec.com



6500 Gattardo Ct., Mississauga, ON L5T 2A2
Phone: (416) 747-7976
Fax: (416) 747-9035
Web: www.GALCanada.com
Email: InfoGALCanada@GAL.com

"ROPE GRIPPER® ELEVATOR BRAKE" DIMENSIONS

MODEL	A	B	C	D	E	F	G	H	I	J	K	L	M	N	O	P	Q	R
624	16 1/2 (419)	14 1/2 (368)	10 (254)	7 1/2 (190)	17 7/8 (454)	19 (483)	10 3/4 (273)	6 3/8 (162)	4 3/8 (111)	12 (305)	18 9/16 (471)	40°	10 1/4 (260)	5 7/8 (149)	3 1/2 (89)	11 1/8 (283)	16 15/16 (430)	1 15/16 (49)
625	18 (457)	16 (406)	11 1/2 (292)	7 1/2 (190)	17 7/8 (454)	19 (483)	10 3/4 (273)	6 3/8 (162)	4 3/8 (111)	12 (305)	18 9/16 (471)	40°	10 1/4 (260)	5 7/8 (149)	3 1/2 (89)	11 1/8 (283)	16 15/16 (430)	1 15/16 (49)
626	16 1/2 (419)	14 1/2 (368)	10 (254)	7 1/2 (190)	17 15/16 (456)	19 1/4 (489)	10 3/4 (273)	6 3/8 (162)	4 3/8 (111)	12 (305)	18 9/16 (471)	40°	10 1/4 (260)	5 7/8 (149)	3 1/2 (89)	11 1/8 (283)	16 15/16 (430)	1 15/16 (49)



New Patents Pending
Patented Worldwide
US Patent 5,228,540



(EC-Type Examination Certificate #NL-01-400-1002-020-03)

Conforms To:

CSA B44.1 (Certificate #88181)
ASME-A17.5 - 2000
ASME-417.5
NRTL/C
EN81-1

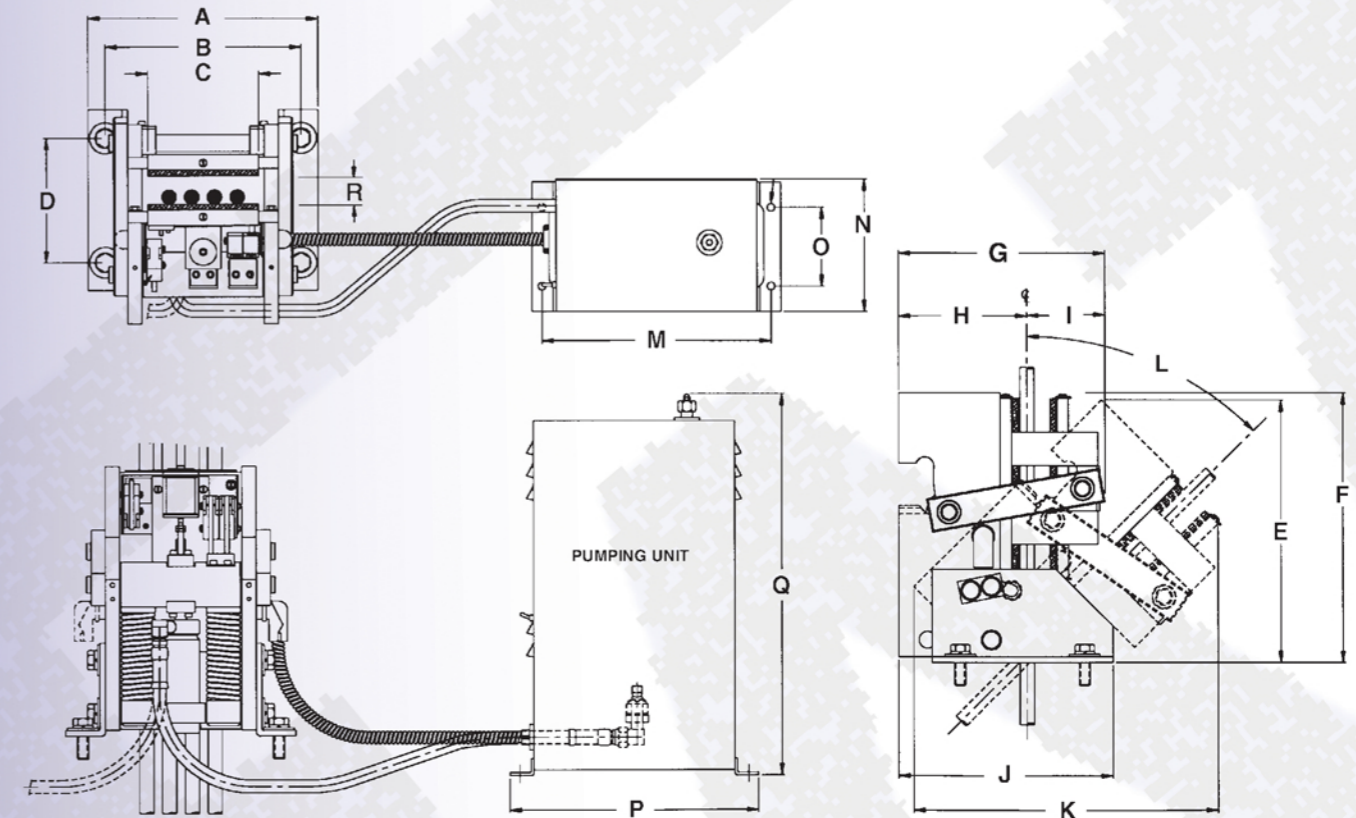
When Ordering Rope Gripper® Elevator Brake, Specify the Following:

Capacity | Car Speed | Empty Car Weight | Counterweight Weight |
 Rope Weight | Compensation Weight | Number and Size of Cables |
 Center Line to Center Line of the Cables | 1:1 or 2:1 Roping |
 Single or Double Wrap | Length of Hydraulic Hose (27" Standard, up to 96" optional)

		"ROPE GRIPPER® ELEVATOR BRAKE" MODEL					
		#618	#620	#622	#624	#625	#626
MAX. OUT TO OUT OF CABLES:		3 3/8" (86 mm)	4 7/8" (124 mm)	6" (152 mm)	10" (254 mm)	11 1/2" (292 mm)	10" (254 mm)
POWER SUPPLY:		6A, 120V ac, 1 PH, 60 Hz					
CONTACT RATINGS:		6A, 250V ac, 0.15A, 250V dc					
1:1 ROPING	MAXIMUM RATINGS						
	RATED SPEED:	250 fpm (1.27 m/s)	350 fpm (1.78 m/s)	600 fpm (3.05 m/s)		1,200 fpm (6.10 m/s)	
	"ROPE GRIPPER® ELEVATOR BRAKE" TRIPPING SPEED:	303 fpm (1.54 m/s)	402 fpm (2.04 m/s)	690 fpm (3.51 m/s)		1,368 fpm (6.95 m/s)	
	CAR RATED LOAD: (with 40 to 50% Counterweights)	1,800 lbs (816 kg)	2,500 lbs (1,134 kg)		5,000 lbs (2,268 kg)		10,000 lbs (4,536 kg)
	CAR, CAR LOAD, COUNTERWEIGHT, HOIST AND COMPENSATION ROPE MASS:	11,000 lbs (4,990 kg)	11,500 lbs (5,216 kg)		18,600 lbs (8,437 kg)		38,000 lbs (17,236 kg)
DOOR ZONE:		± 10 inches (254 mm)					
MIN.	CAR RATED LOAD:	600 lbs (272 kg)	600 lbs (272 kg)		1,500 lbs (680 kg)		2,500 lbs (1,134 kg)
	CAR & COUNTER- WEIGHT MASS:	2,280 lbs (1,034 kg)	2,280 lbs (1,034 kg)		6,000 lbs (2,722 kg)		8,000 lbs (3,629 kg)
2:1 ROPING	MAXIMUM RATINGS						
	RATED SPEED:	175 fpm (.89 m/s)	250 fpm (1.27 m/s)	400 fpm (2.03 m/s)		800 fpm (4.06 m/s)	
	"ROPE GRIPPER® ELEVATOR BRAKE" TRIPPING SPEED:	225 fpm (1.14 m/s)	303 fpm (1.54 m/s)	459 fpm (2.33 m/s)		921 fpm (4.68 m/s)	
	CAR RATED LOAD: (with 40 to 50% Counterweights)	3,600 lbs (1,633 kg)	5,000 lbs (2,268 kg)		10,000 lbs (4,536 kg)		20,000 lbs (9,072 kg)
	CAR, CAR LOAD, COUNTERWEIGHT, HOIST AND COMPENSATION ROPE MASS:	22,000 lbs (9,979 kg)	23,000 lbs (10,432 kg)		38,000 lbs (17,236 kg)		76,000 lbs (34,472 kg)
DOOR ZONE:		10 inches (254 mm) ±					
MIN.	CAR RATED LOAD:	1,200 lbs (544 kg)	1,500 lbs (680 kg)		2,500 lbs (1,134 kg)		5,000 lbs (2,268 kg)
	CAR & COUNTER- WEIGHT MASS:	4,560 lbs (2,068 kg)	6,000 lbs (2,722 kg)		8,000 lbs (3,629 kg)		16,000 lbs (7,258 kg)
SHIPPING WEIGHT:		90 lbs (41 kg)	100 lbs (45 kg)	180 lbs (82 kg)	300 lbs (136 kg)	335 lbs (152 kg)	

Notes for Models 618, 620 & 622

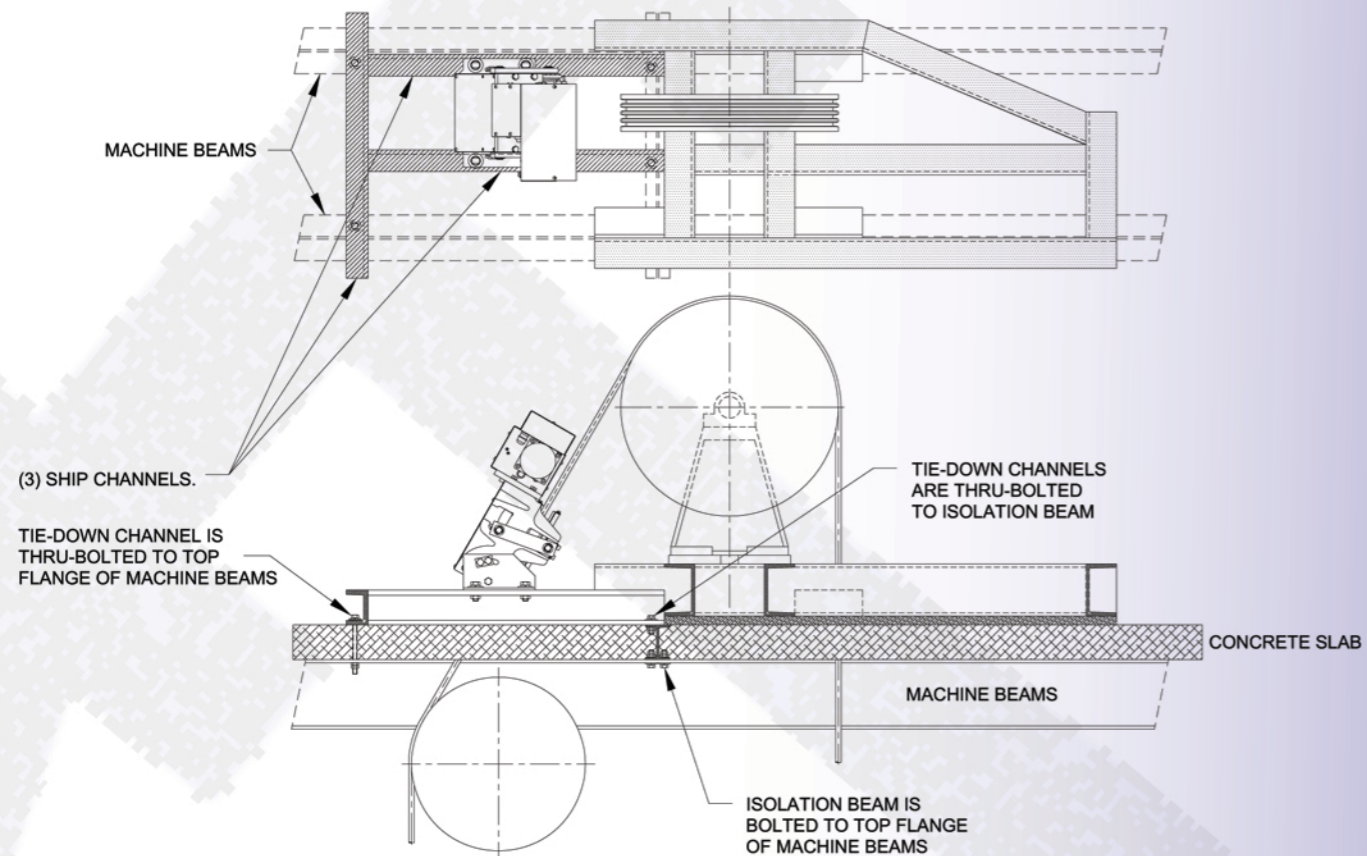
- Model 618 Rope Gripper® (for European use) is designed to be manually pumped and does not include a pumping unit; in the event of a power failure, a battery back-up is necessary
- Pumping units, for 620 & 622, can be mounted on either side of Rope Gripper®
- (4) 1/2" bolts are required to mount Rope Gripper® and (4) 1/4" – 20 N.C. bolts to mount pumping unit
- C dimension indicates lining width and maximum outside to outside of hoist ropes
- L dimension is adjustable from 0° to 45°



"ROPE GRIPPER® ELEVATOR BRAKE" DIMENSIONS

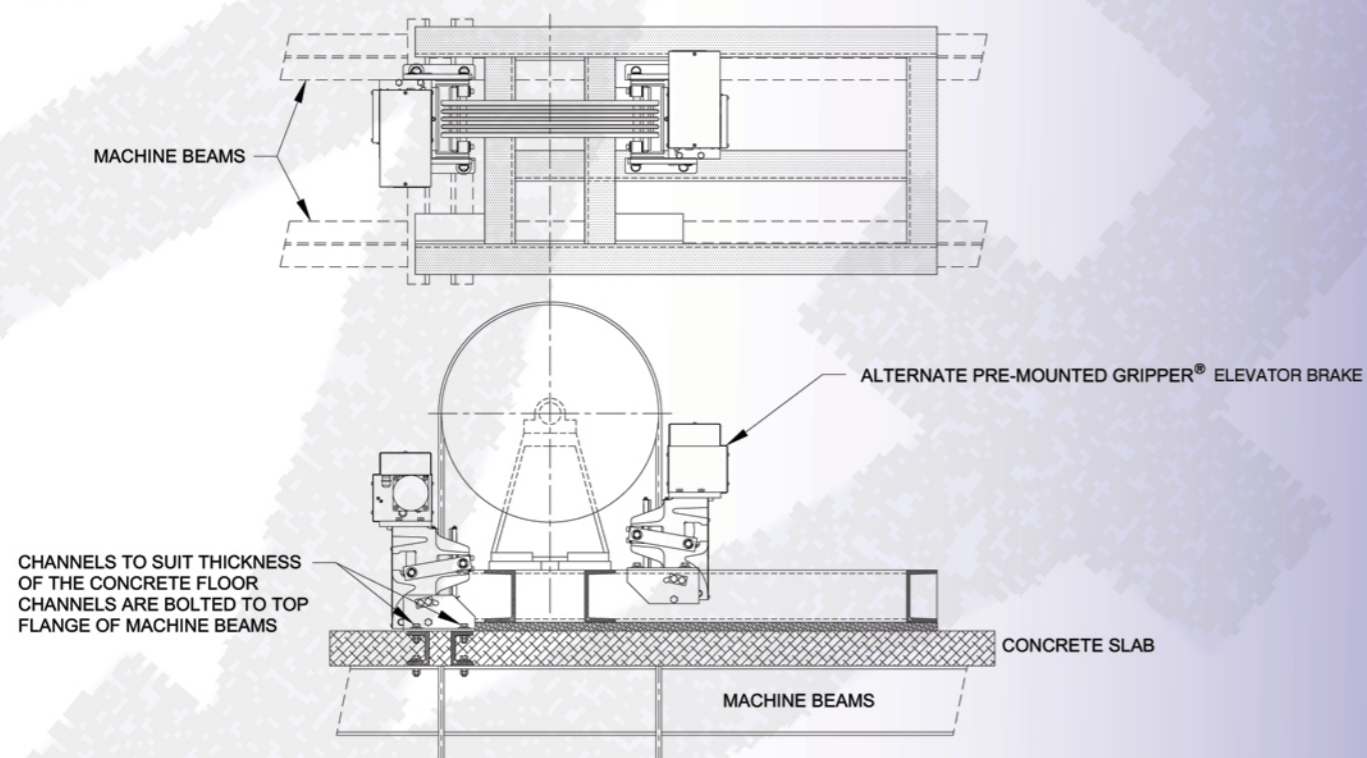
MODEL	A	B	C	D	E	F	G	H	I	J	K	L	M	N	O	P	Q	R
618	7 (178)	6 1/8 (156)	3 1/4 (83)	5 (127)	9 13/16 (249)	9 1/16 (230)	8 5/8 (219)	5 7/16 (138)	3 3/16 (81)	8 11/16 (221)	12 (305)	40°						1 1/4 (32)
620	10 1/8 (257)	8 5/8 (219)	4 7/8 (124)	5 1/2 (140)	11 11/16 (297)	12 (305)	9 1/4 (235)	5 3/4 (146)	3 1/2 (89)	9 1/2 (241)	13 1/2 (343)	45°	10 1/4 (260)	5 7/8 (149)	3 1/2 (89)	11 1/8 (283)	16 15/16 (430)	1 1/4 (32)
622	11 1/2 (292)	10 (254)	6 (152)	5 1/2 (140)	14 11/16 (373)	16 1/4 (413)	9 (229)	5 3/4 (146)	3 1/4 (83)	9 1/2 (241)	18 1/2 (419)	45°	10 1/4 (260)	5 7/8 (149)	3 1/2 (89)	11 1/8 (283)	16 15/16 (430)	1 1/4 (32)

Typical Mounting Arrangements



Shown with deflector sheave

Shown without deflector sheave and with alternate pre-mounted gripper® elevator brake



HOLLISTER-WHITNEY ROPE GRIPPER® MODELS 620G & 622G

SAFETY FIRST WITH THE ROPE GRIPPER® ELEVATOR BRAKE

Protects against ascending car overspeed and unintended car movement

- Protects against car falling up or down
- Protects against car leaving the floor with the door open
- Protects against slipping tractions

Powerful, steady pressure on ropes

- Won't damage ropes
- Won't put excessive stress on machine or sheave
- Easily replaceable, non asbestos, non metallic linings
- Brake engages ropes gently, but provides a quick, powerful grip

Compact – one piece design

- No separate Hydraulic or Air Unit
- Adjusts for almost every application
- Easy installation

Mechanically Set

- Triggers instantly on removal of power
- Designed to protect gears from potential damage
- Quiet, dependable operation

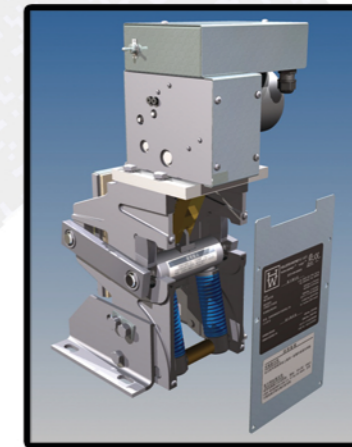
Electrically Set

- Automatic reset when power restores
- Manual reset required if fault is detected

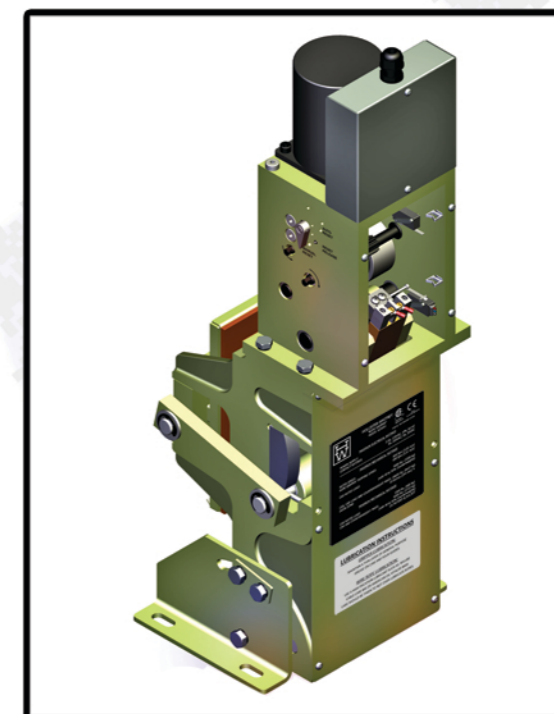
110 VAC or 230 VAC – 50/60 Cycle – 3 Amp

New Patents Pending
Patented Worldwide
US Patent 5,228,540

Model 620G



Model 622G



Hollister-Whitney
ELEVATOR CORPORATION

#1 Hollister-Whitney Parkway, Quincy, IL 62305
Phone: (217) 222-0466
Fax: (217) 222-0493
Web: www.HollisterWhitney.com
Email: Info@HWEC.com



6500 Gottardo Ct., Mississauga, ON L5T 2A2
Phone: (416) 747-7976
Fax: (416) 747-9035
Web: www.GALCanada.com
Email: InfoGALCanada@GAL.com

	1:1 Roping		2:1 Roping		
	Rope Gripper® Model 620G	Rope Gripper® Model 622G	Rope Gripper® Model 620G	Rope Gripper® Model 622G	
Rated Speed	350 fpm (1.78 m/s)	600 fpm (3.05 m/s)	250 fpm (1.27 m/s)	400 fpm (2.03 m/s)	MAXIMUM
“Rope Gripper® Elevator Brake” Tripping Speed	402 fpm (2.04 m/s)	690 fpm (3.51 m/s)	303 fpm (1.54 m/s)	459 fpm (2.33 m/s)	
Car Rated Load: (with 40% to 50% Counterweights)	2,500 lbs (1,134 kg)	5,000 lbs (2,268 kg)	5,000 lbs (2,268 kg)	10,000 lbs (4,536 kg)	
Car, Car Load, Counterweight, Hoist and Compensation Rope Mass	11,500 lbs (5,216 kg)	18,600 lbs (8,437 kg)	23,000 lbs (10,423 kg)	38,000 lbs (17,236 kg)	
Door Zone	± 10 in (254 mm)	± 10 in (254 mm)	± ± 10 in (254 mm)	± 10 in (254 mm)	
Maximum Out to Out of Cables	4 7/8 in (124 mm)	6 in (152 mm)	4 7/8 in (124 mm)	6 in (152 mm)	
Car Rated Load	600 lbs (272 kg)	1,500 lbs (680 kg)	1,500 lbs (680 kg)	2,500 lbs (1,134 kg)	MINIMUM
Car & Counterweight Mass	2,280 lbs (1,034 kg)	6,000 lbs (2,722 kg)	6,000 lbs (2,722 kg)	8,000 lbs (3,629 kg)	

