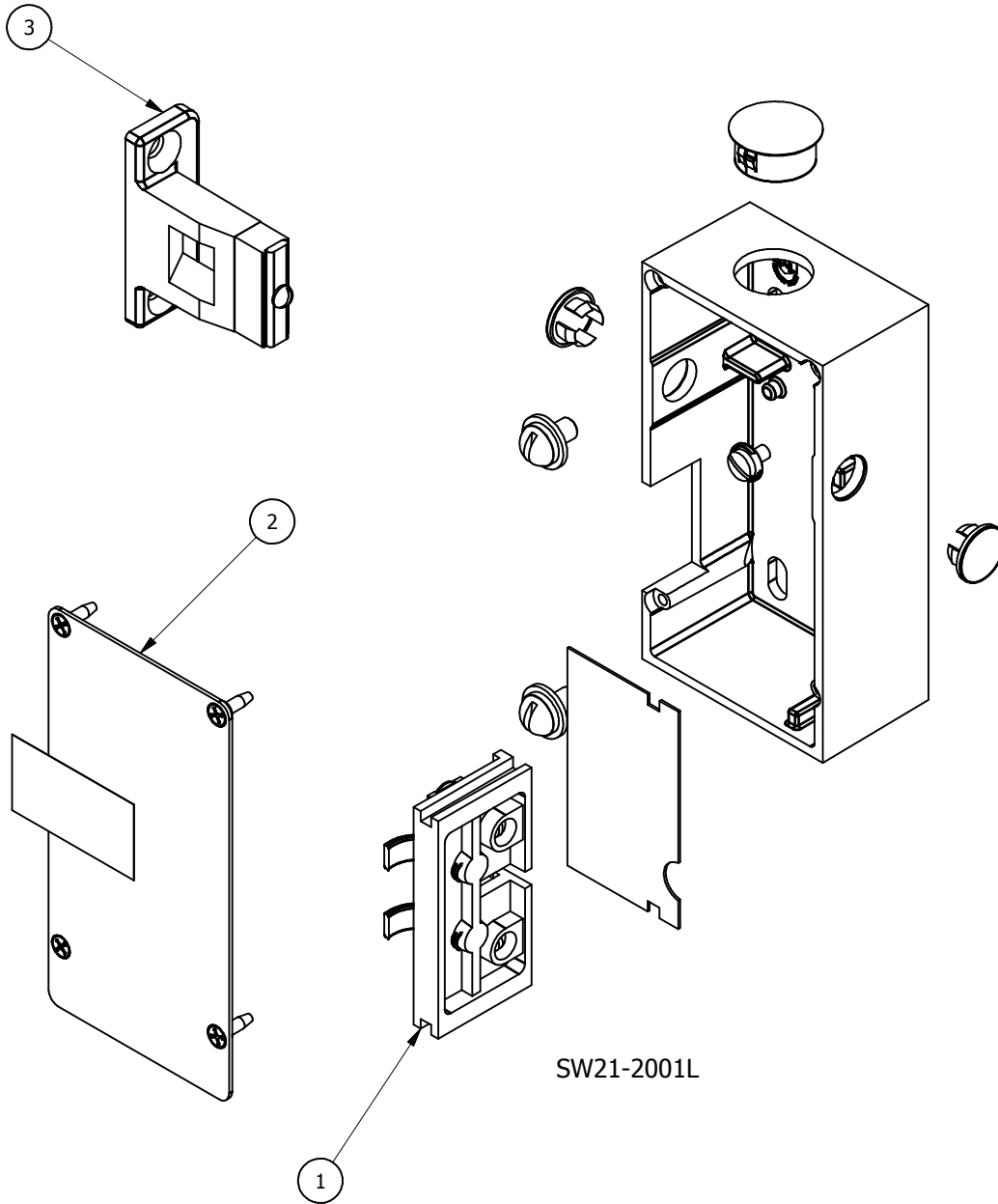
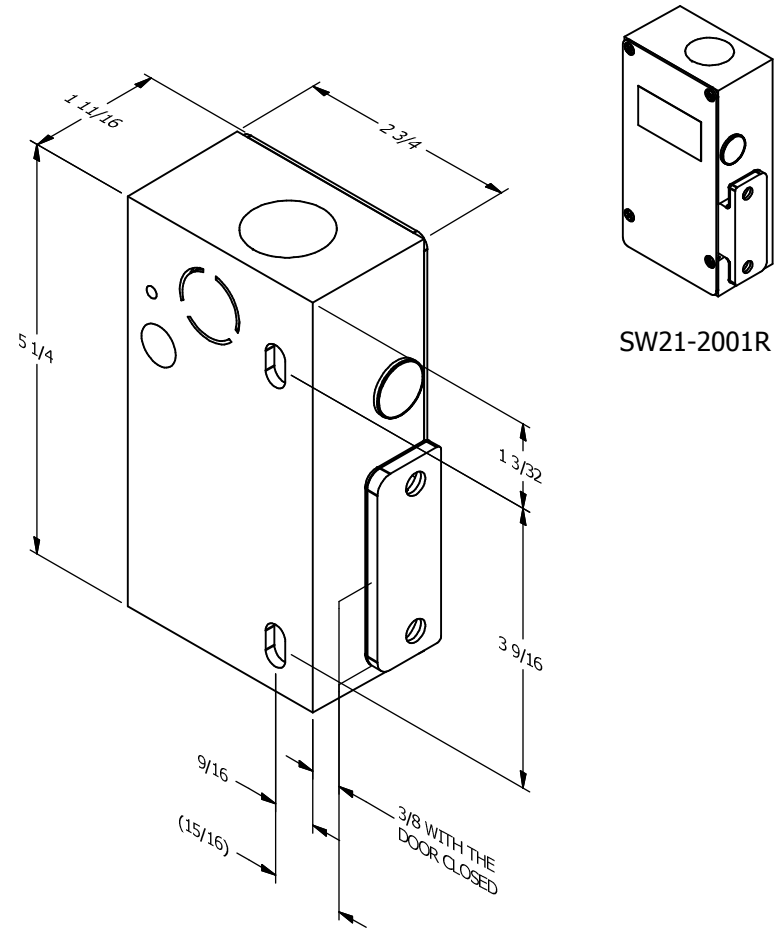


PARTS LIST			
ITEM	QTY	PART NUMBER	DESCRIPTION
1	1	INT22-0022N	CONTACT ASSEMBLY, N/NHA INTERLOCK LOWER
2	1	SW21-9001N	COVER ASSEMBLY
3	1	INT4-0001N	KEEPER, M/N INTERLOCK SWING DOOR



SW21-2001L



SW21-2001R

TYPE "SN-C" ELECTRICAL CONTACT

UNLESS OTHERWISE SPECIFIED DIMENSIONS ARE IN INCHES ---- (X.XX) = X.XX REF. = REFERENCE ONLY

G.A.L. MANUFACTURING CORP.
 50 East 153rd St. Bronx, NY 10451 (718)292-9000
THIS DRAWING AND THE DESIGNS CONTAINED IN IT ARE THE SOLE PROPERTY OF G.A.L. MANUFACTURING CORP. IT IS FURNISHED UNDER THE CONDITION THAT IT SHALL NOT BE COPIED, LOANED OR OTHERWISE DISTRIBUTED OR DISPOSED OF, DIRECTLY OR INDIRECTLY, WITHOUT PRIOR WRITTEN PERMISSION.

SHEET 1 OF 1 REV: A
 PART/DOCUMENT #
8715-20

DRAWING: 8715-20.idw
 MODEL: SW21-2001L.iam

TYPE "SN-C" ELECTRICAL CONTACT

8715-20