



Hollister-Whitney Elevator Corporation

#1 Hollister-Whitney Parkway
Quincy, IL 62305
Phone: 217-222-0466

Fax: 217-222-0493
e-mail: info@hollisterwhitney.com
www.hollisterwhitney.com

HOLLISTER-WHITNEY GEARED MACHINE DUAL MICRO-SWITCH BRAKE SUPPLEMENT

Hollister-Whitney Elevator Corp. strongly recommends Brake Switches be installed on all Hollister-Whitney Geared Machines. This allows brake position feedback to the controller.

Brake Switches are Standard Equipment on all Current H-W Geared Machines

This supplement provides Assembly and Replacement Part listings for adding or repairing Dual Micro-Switches on all H-W Geared Machines Brakes.

FOR PROPER ADJUSTMENT OF H-W GEARED MACHINE BRAKES REFER TO THE FOLLOWING E-DOCUMENTS AT:

<http://www.hollisterwhitney.com/#tech-support>

- E-117: ALL DRUM BRAKES (43, 53, 63, & 74 Machine)**
- E-128: #102 & #112 DISC BRAKES (44, 54, & 64 Machine)**
- E-131: #92 DISC BRAKE (34 Machine)**

Read and understand ALL Brake Instructions before starting adjustment, repair or installation of Dual Switches. The installation crew, mechanic, adjuster, and maintenance personnel should be thoroughly familiar with the proper installation, adjustment, operation, and maintenance of HOLLISTER-WHITNEY Disc Brakes and Drum Brakes. Brakes **MUST** be adjusted to meet all local, city, state and national codes.

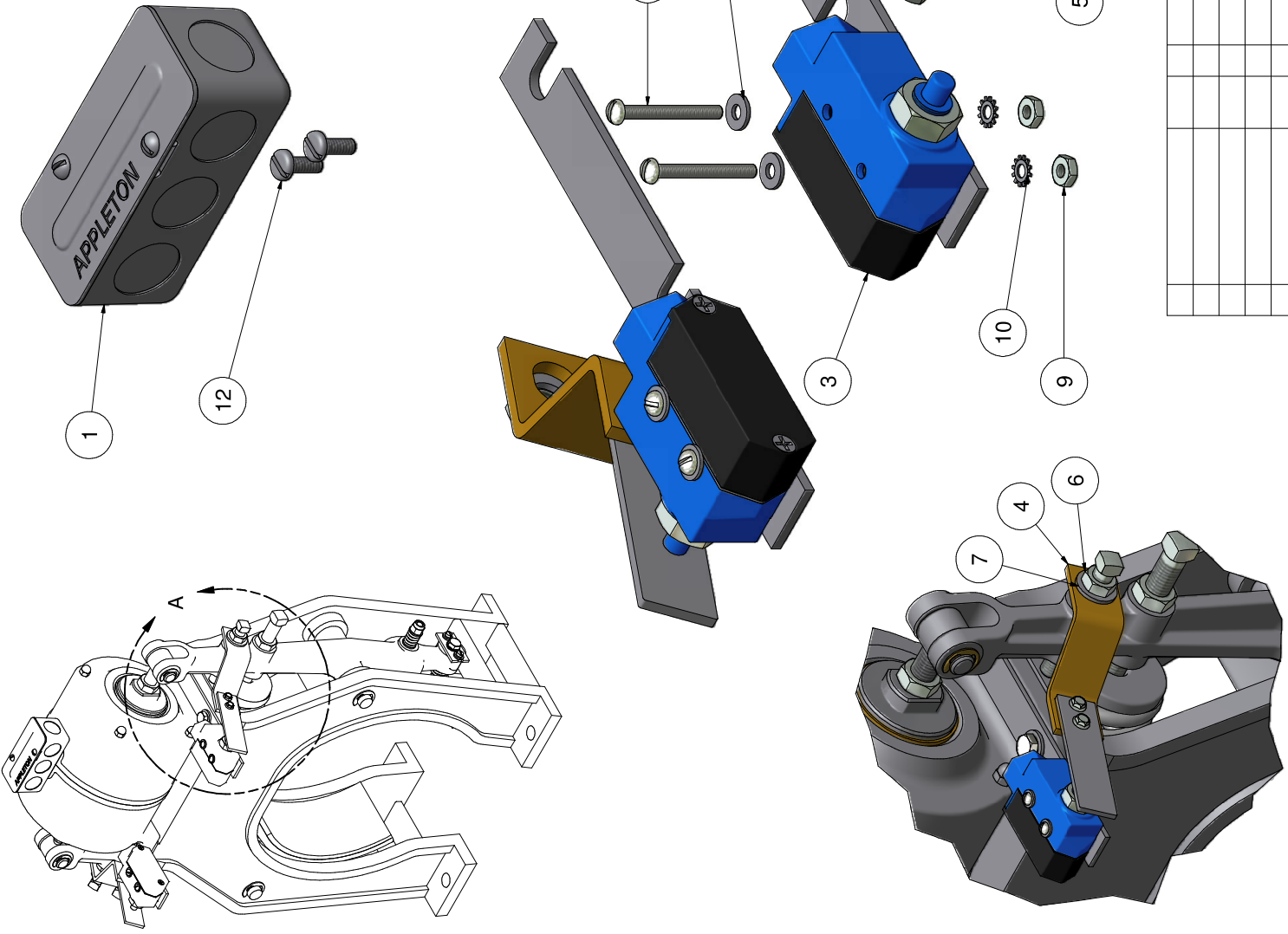
SAFE ELEVATOR OPERATION DEPENDS ON PROPER BRAKE OPERATION DURING INSTALLATION, AS WELL AS THROUGHOUT THE LIFE OF THE ELEVATOR.

After installing or repairing Dual Switches, activate Brake several times to assure proper operation.

Dust Tight Switches, and Switches with Gold Contacts are available.

Parts List

ITEM	QTY	PART NUMBER	DESCRIPTION
1	1	90-015	ELECTRICAL BOX
2	2	90-041	BRACKET - SWITCH
3	2	90-043	MICROSWITCH BZE6-2RQ
4	2	90-085	EXTENSION - BRAKE ARM
5	2	102-056-MS	LEVER - BRAKE SWITCH
6	2	1/2 - 13 UNC	HEX JAM NUT
7	2	1/2 WASHER	STANDARD WASHER
8	4	#8-32 UNC x 1.5	RND HEAD MACHINE SCREW
9	4	#8 - 32 UNC	HEX NUT
10	4	#8 LOCK WASHER	EXT. TOOTH LOCK WASHER
11	4	#8 WASHER	STANDARD WASHER
12	2	#10-24 UNC x 0.5	PAN HEAD MACHINE SCREW
13	4	#10-32 x 0.5	WHIZ BOLT
14	4	10-32 NF	WHIZ NUT



Weight - 2.49 lbmass

HOLLISTER-WHITNEY ELEVATOR CO.	
TITLE	DUAL SWITCH KIT - #90 BRAKE
DRAWN BY	SCALE
MATERIAL	SEE PARTS LIST
LTL NA	DATE
SHEET C	SIZE
PRODUCTION RELEASE, LTL 5/1/12	A PUR #491
DATE	5/1/2012
SIZE	

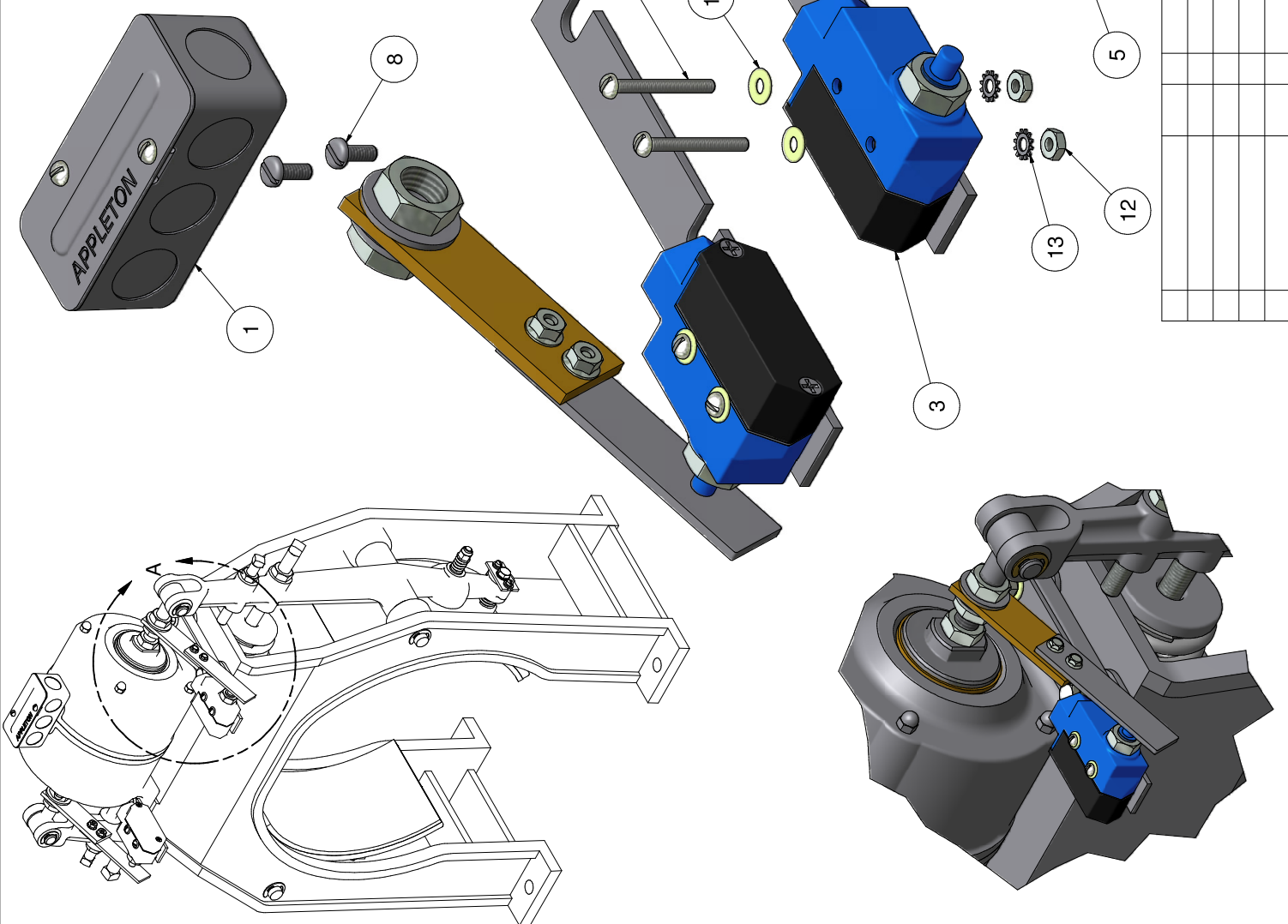
DIMENSIONAL TOL.
1. PLACE 0.001 ANGLES 0.01
2. PLACE 0.001 ANGLES 0.01
3. PLACE 0.001 ANGLES 0.01
REF. OPEN, (NOMINAL) ± 0.0156

90-040 DUAL

Parts List

ITEM	QTY	PART NUMBER	DESCRIPTION
1	1	90-015	ELECTRICAL BOX
2	2	90-041	BRACKET - SWITCH
3	2	90-043	MICROSWITCH BZE6-2RQ
4	2	110-085	EXTENSION - BRAKE ARM
5	2	102-056-MS	LEVER - BRAKE SWITCH
6	4	5/8-11 UNC	JAM NUT
7	4	5/8 WASHER	STANDARD WASHER
8	2	#10-24 UNC x 0.5	PAN HEAD MACHINE SCREW
9	4	#10-32 x 0.5	WHIZ BOLT
10	4	10-32 NF	WHIZ NUT
11	4	#8-32 UNC x 1.5	RND HEAD MACHINE SCREW
12	4	#8 - 32 UNC	HEX NUT
13	4	#8 LOCK WASHER	EXT. TOOTH LOCK WASHER
14	4	#8 WASHER	STANDARD WASHER

WASHERS APPLIED AS NECESSARY (B)

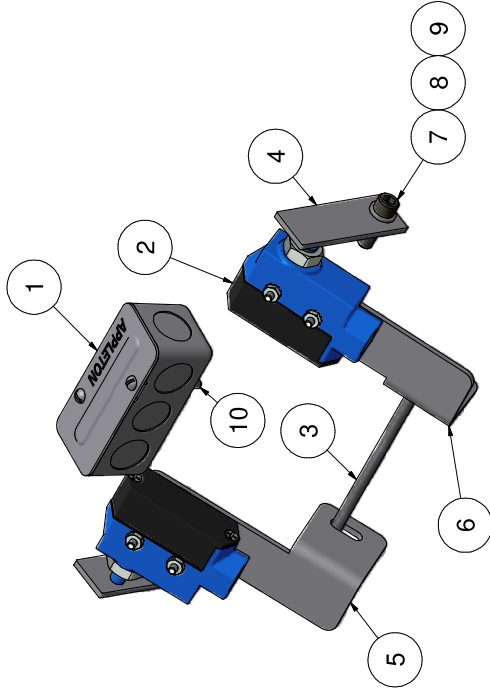
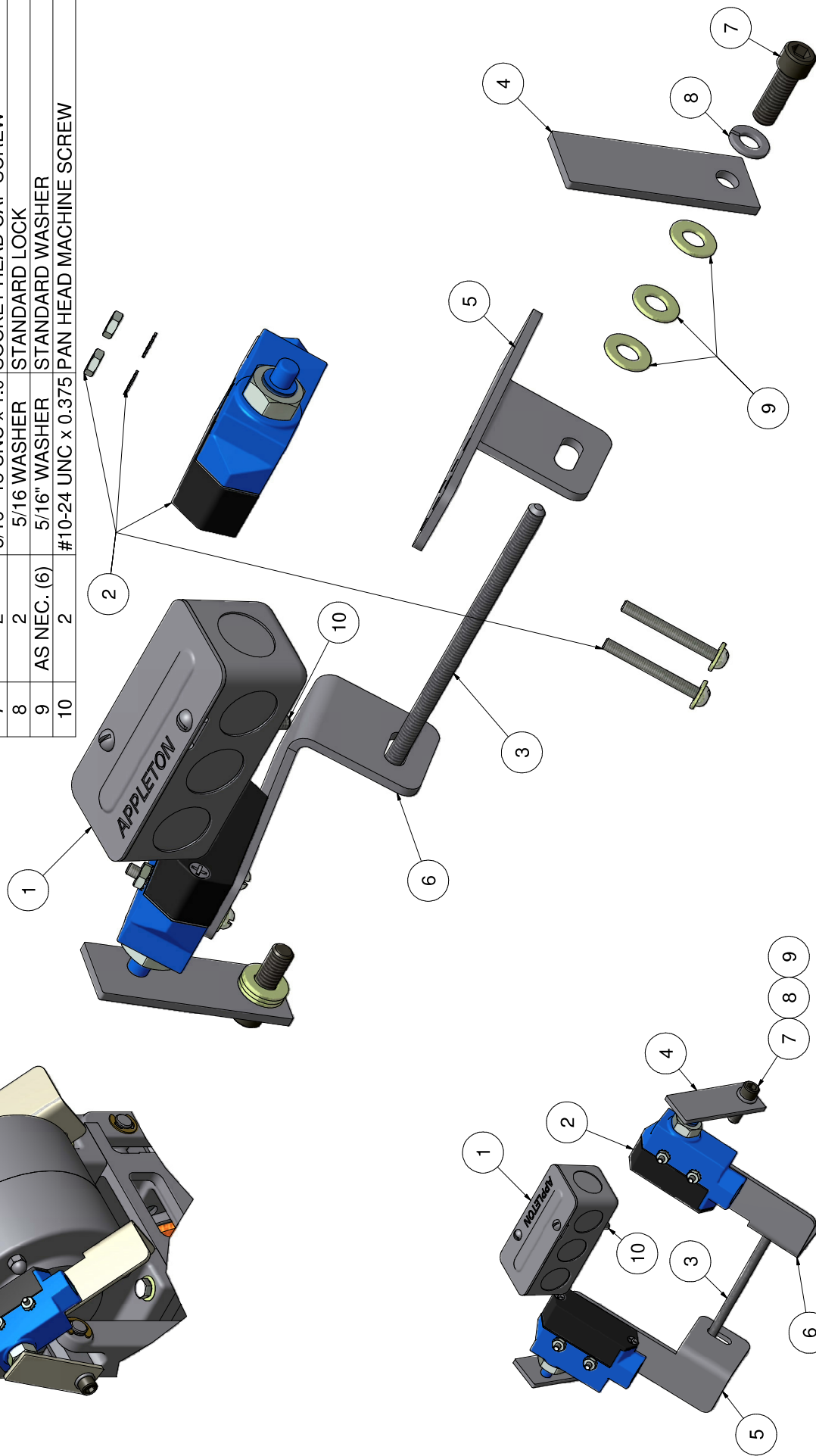
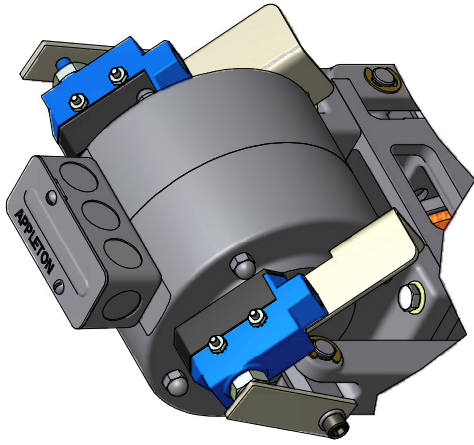


Weight: 2.50 lbmass

HOLLISTER-WHITNEY ELEVATOR CO.		TITLE DUAL SWITCH KIT - #110 & #120 BRAKE (B)	
DRAWN BY LTL	SCALE NATURAL	DATE 5/2/2012	SEE PARTS LIST
ADD #120 BRAKE, NOTE, LTL PLR #538	11/2/12	SHEET C	DIMENSIONAL TOL. 3 & 4 PLACE, 100 FT. ANGLES 30. REF. OPEN, (NOMINAL) ± 0.0156
PRODUCTION RELEASE, LTL PLR #491	5/3/12	SIZE	110-040 DUAL

Parts List

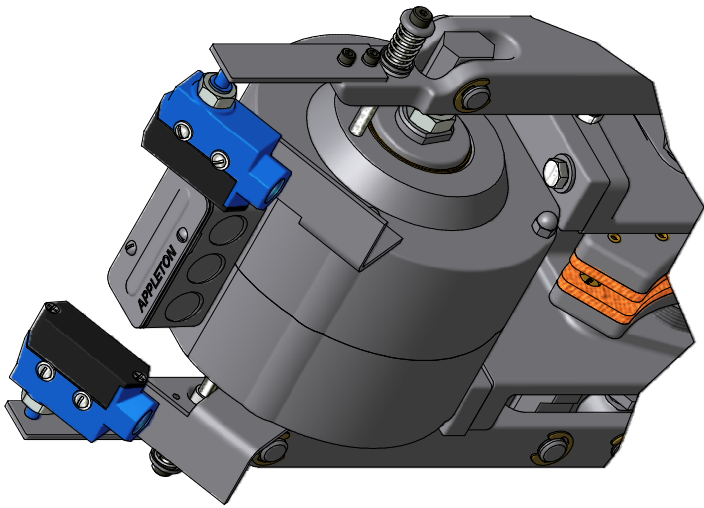
ITEM	QTY	PART NUMBER	DESCRIPTION
1	1	90-015	ELECTRICAL BOX
2	2	90-043	MICROSWITCH BZE6-2RQ
3	1	92-010-1	ROD - SOLENOID HOUSING
4	2	92-056-MS	LEVER - BRAKE SWITCH
5	1	102-057	SWITCH BRACKET - LEFT HAND
6	1	102-057 RH	SWITCH BRACKET - RIGHT HAND
7	2	5/16 - 18 UNC x 1.0	SOCKET HEAD CAP SCREW
8	2	5/16 WASHER	STANDARD LOCK
9	AS NEC. (6)	5/16" WASHER	STANDARD WASHER
10	2	#10-24 UNC x 0.375	PAN HEAD MACHINE SCREW



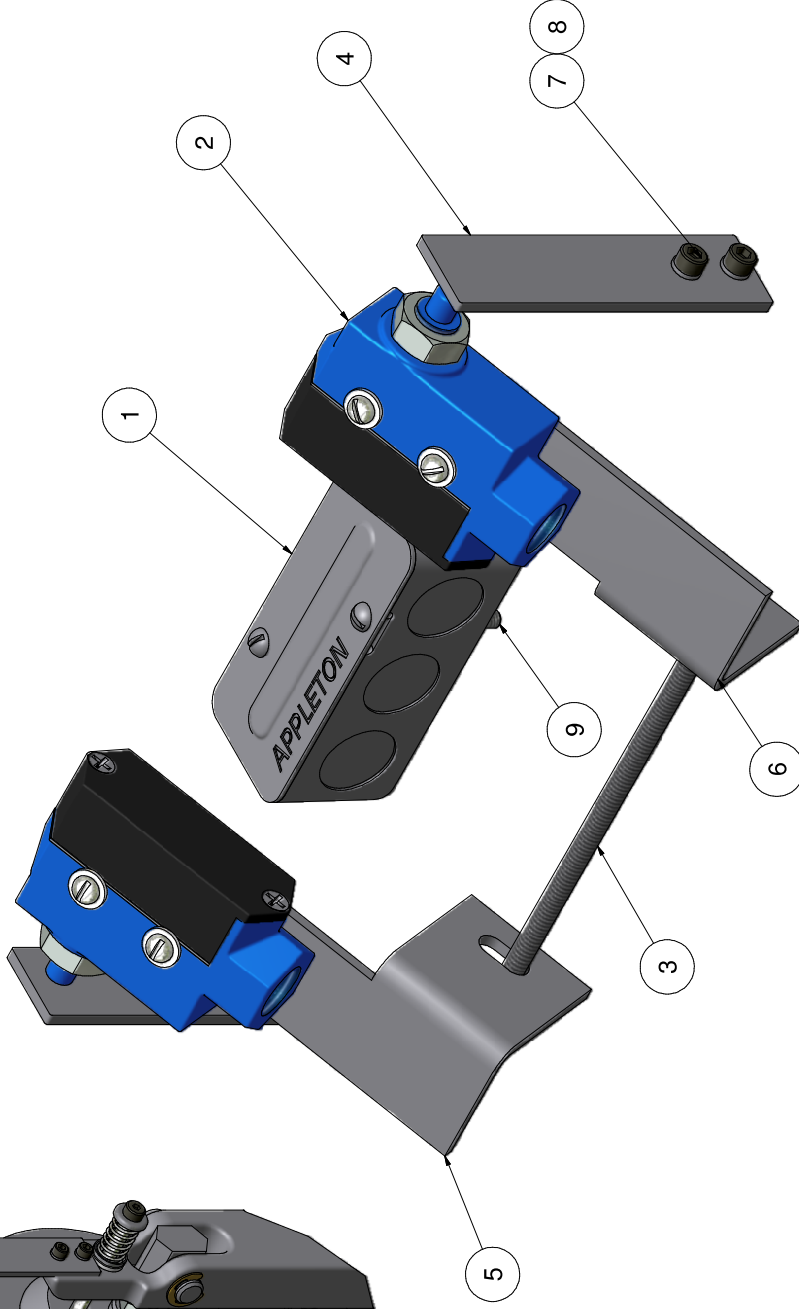
HOLLISTER-WHITNEY ELEVATOR CO.		TITLE		SWITCH ASSEMBLY - 92 DISK BRAKE	
DRAWN BY		SCALE		MATERIAL	
LTL		NA		SEE PARTS LIST	
SHEET		C		DATE	
A		PUR # 521		9/13/2012	
LTL		9/13/12		SIZE	
PRODUCTION RELEASE				DIMENSIONAL TOL.	
				1. ALL DIMENSIONS UNLESS OTHERWISE SPECIFIED	
				2. ALL DIMENSIONS UNLESS OTHERWISE SPECIFIED	
				3. ALL DIMENSIONS UNLESS OTHERWISE SPECIFIED	
				REF. OPEN, (NOMINAL) ± 0.0156	
				92-040 DUAL	

Parts List

ITEM	QTY	PART NUMBER	DESCRIPTION
1	1	90-015	ELECTRICAL BOX
2	2	90-043	MICROSWITCH BZE6-2RQ
3	1	102-010-1	ROD - SOLENOID HOUSING
4	2	102-056-MS	LEVER - BRAKE SWITCH
5	1	102-057	SWITCH BRACKET - LEFT HAND
6	1	102-057 RH	SWITCH BRACKET - RIGHT HAND
7	4	#10-24 UNC x 0.5	SOCKET HEAD CAP SCREW
8	4	#10 LOCK WASHER	STANDARD LOCK WASHER
9	2	#10-24 UNC x 0.375	PAN HEAD MACHINE SCREW



ASSEMBLY DETAIL



HOLLISTER-WHITNEY ELEVATOR CO.	
TITLE	SWITCH ASSEMBLY - 102 & 112 DISC BRAKE
BY	SCALE
DRAWN	MATERIAL
LTL	NA
LTL	DATE
LTL	SIZE
LTL	5/6/2011
LTL	C
LTL	SEE PARTS LIST
LTL	1 PLACE #041 2 PLACE #005
LTL	3 & 4 PLACE #001 ANGLES & 1"
LTL	REC-OPEN, DIMENSIONAL TOLERANCE
LTL	B
LTL	102-040 DUAL