



G.A.L. Manufacturing Corporation

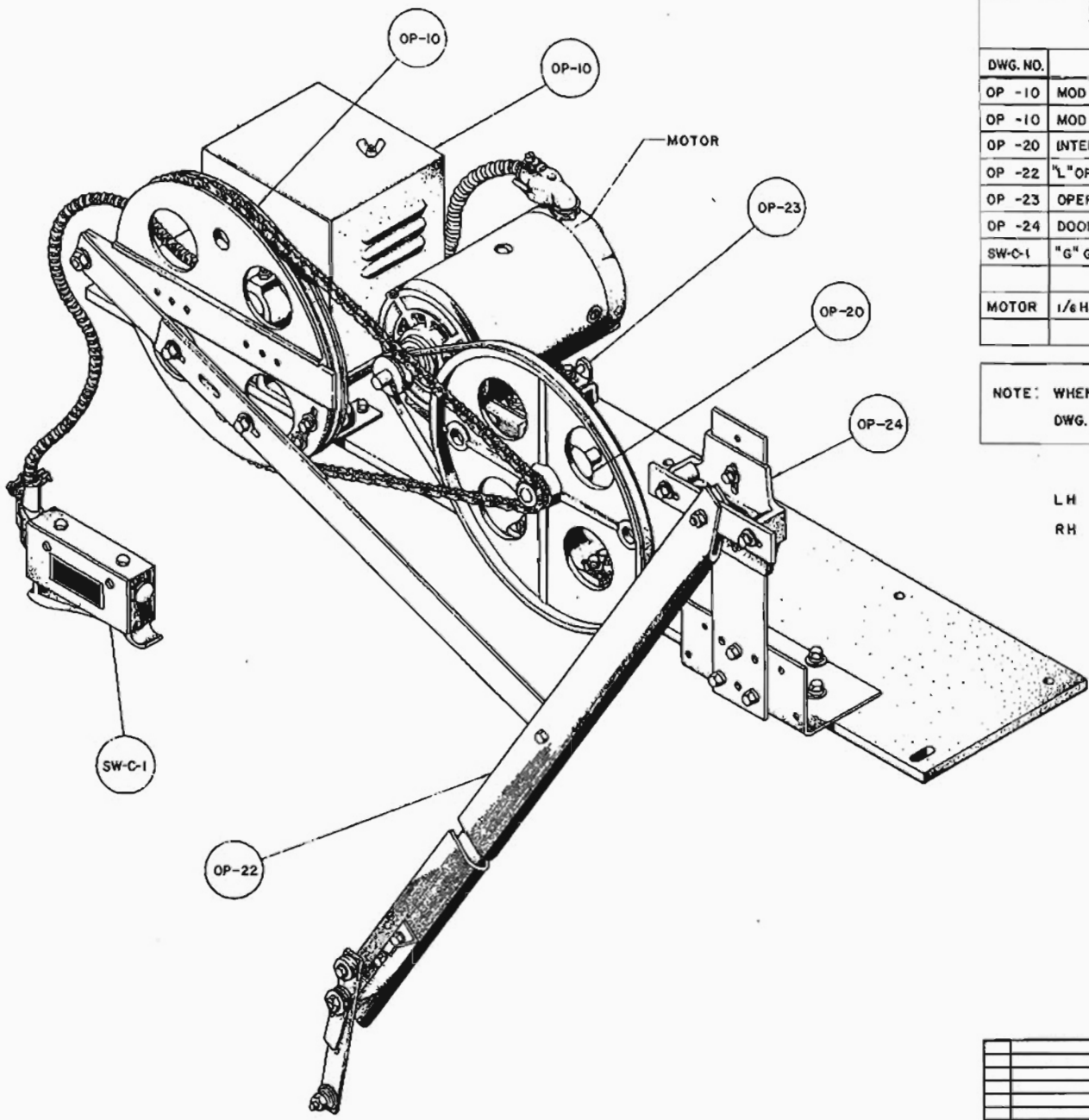
50 East 153rd Street, Phone 718-292-9000 Fax 718-292-2034
 Bronx, N.Y. 10451 Toll Free 877-425-3538 Web www.gal.com
 877-425-7763 E-mail info@gal.com

OPERATORS		
MODEL	ITEM	PART DWG. No.
MODL 2SP or SS DOORS	OPERATOR	OP-1
MODL CP DOORS	OPERATOR	OP-2
MOML or MOHL 2SP or SS DOORS	OPERATOR	OP-3
MOML or MOHL CP DOORS	OPERATOR	OP-4
MOA 2SP or SS DOORS	OPERATOR	OP-5
MOD	LIMIT CONTROL	OP-10
MODP	LIMIT CONTROL	OP-11
MOM and MOH	LIMIT CONTROL	OP-12
MOM and MOH	TERMINAL BOX	OP-13
MOA	LIMIT CONTROL	OP-14
MOAP	LIMIT CONTROL	OP-15
	INTERMEDIATE PULLEY	OP-20
MOM and MOH	DRIVE PULLEY & BEARING BLOCK ASSY	OP-21
	DRIVE ARM ASSEMBLIES	OP-22
	MOTOR MOUNTING BASE	OP-23
2SP or SS DOORS	DOOR DRIVE ARM SUPPORT	OP-24
2SCP or CP DOORS	DOOR DRIVE ARM SUPPORT	OP-25

MODL DOOR OPERATOR TWO SPEED or SINGLE SPEED (SLIDING DOORS)	
DWG. NO.	DESCRIPTION
OP -10	MOD OPERATOR LIMIT CONTROL
OP -10	MOD DRIVE PULLEY
OP -20	INTERMEDIATE PULLEY & BEARING BLOCK
OP -22	"L" OPERATOR DOOR DRIVE ARM ASS'Y
OP -23	OPERATOR MOTOR MOUNTING BASE
OP -24	DOOR DRIVE ARM SUPPORT
SW-C-1	"G" GATE SWITCH
MOTOR	1/6 HP -220V DC SHUNT WOUND 1140 RPM

NOTE: WHEN ORDERING, REFER TO SPECIFIC
DWG. NO. FOR PARTS REQUIRED.

LH SHOWN
RH OPPOSITE AS SHOWN



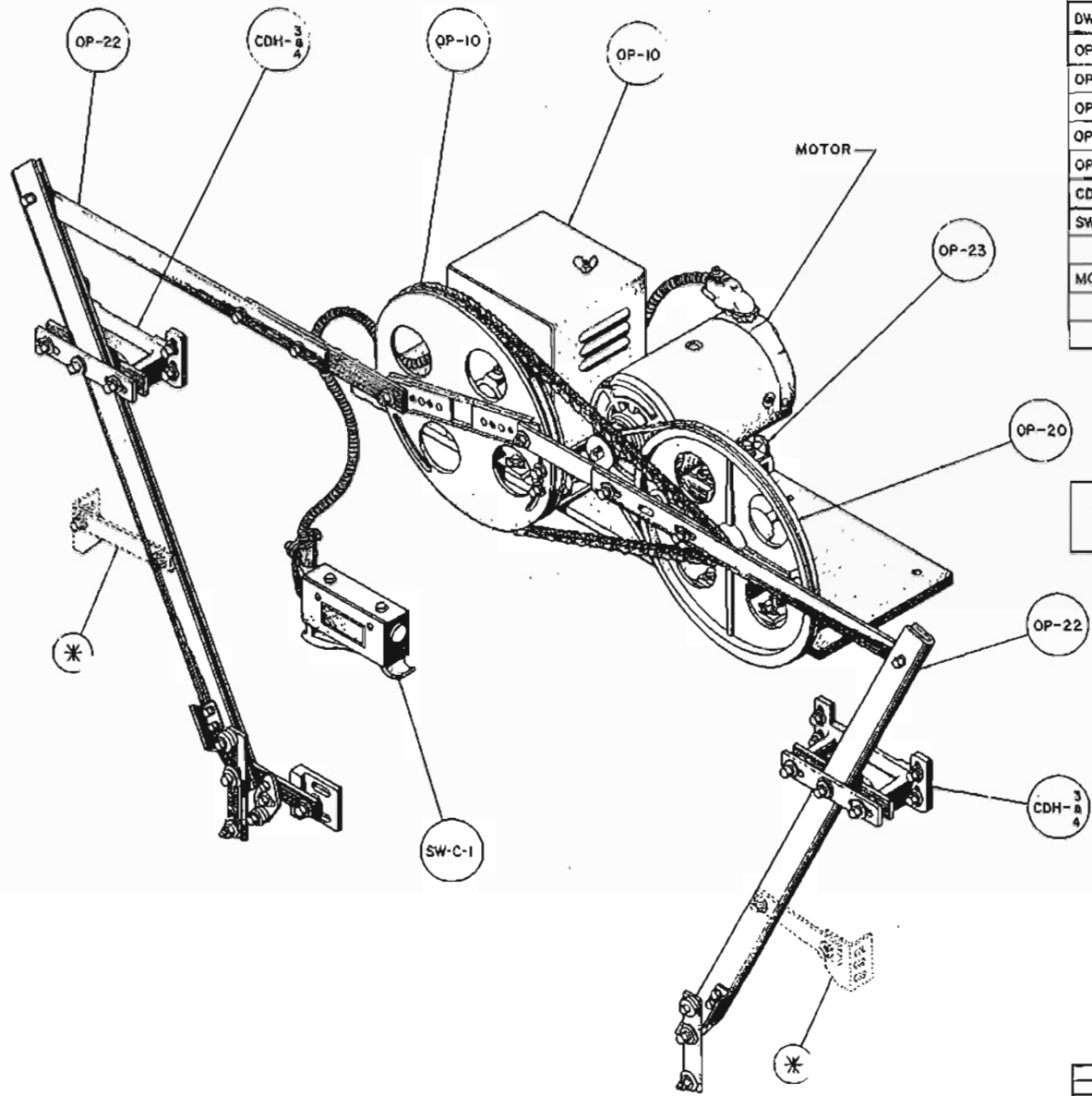
B. A. L. MANUFACTURING CORP.
30 EAST 134th STREET
BRONX, N. Y. 10461

MODL DOOR OPERATOR
TWO SPEED or SINGLE SPEED
(SLIDING DOORS)

NO.	REVISION	DATE	CHK. BY	DATE

SCALE 1/4" DATE 12-12-1974
DWN. BY S. E. M.
CHK. BY G. F. D.

OP - 1

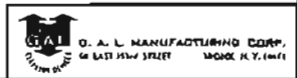


MODL DOOR OPERATOR
CENTER - PARTING

DWG. NO.	DESCRIPTION
OP -10	MOD OPERATOR LIMIT CONTROL
OP -10	MOD DRIVE PULLEY
OP -20	INTERMEDIATE PULLEY & BEARING BLOCK
OP -22	"L" OPERATOR DOOR DRIVE ARM ASS'Y
OP -23	OPERATOR MOTOR MOUNTING BASE
CDH-3&4	DOOR DRIVE ARM SUPPORT
SW-C-1	"G" GATE SWITCH
MOTOR	1/8 HP - 220V DC SHUNT WOUND 1140 RPM

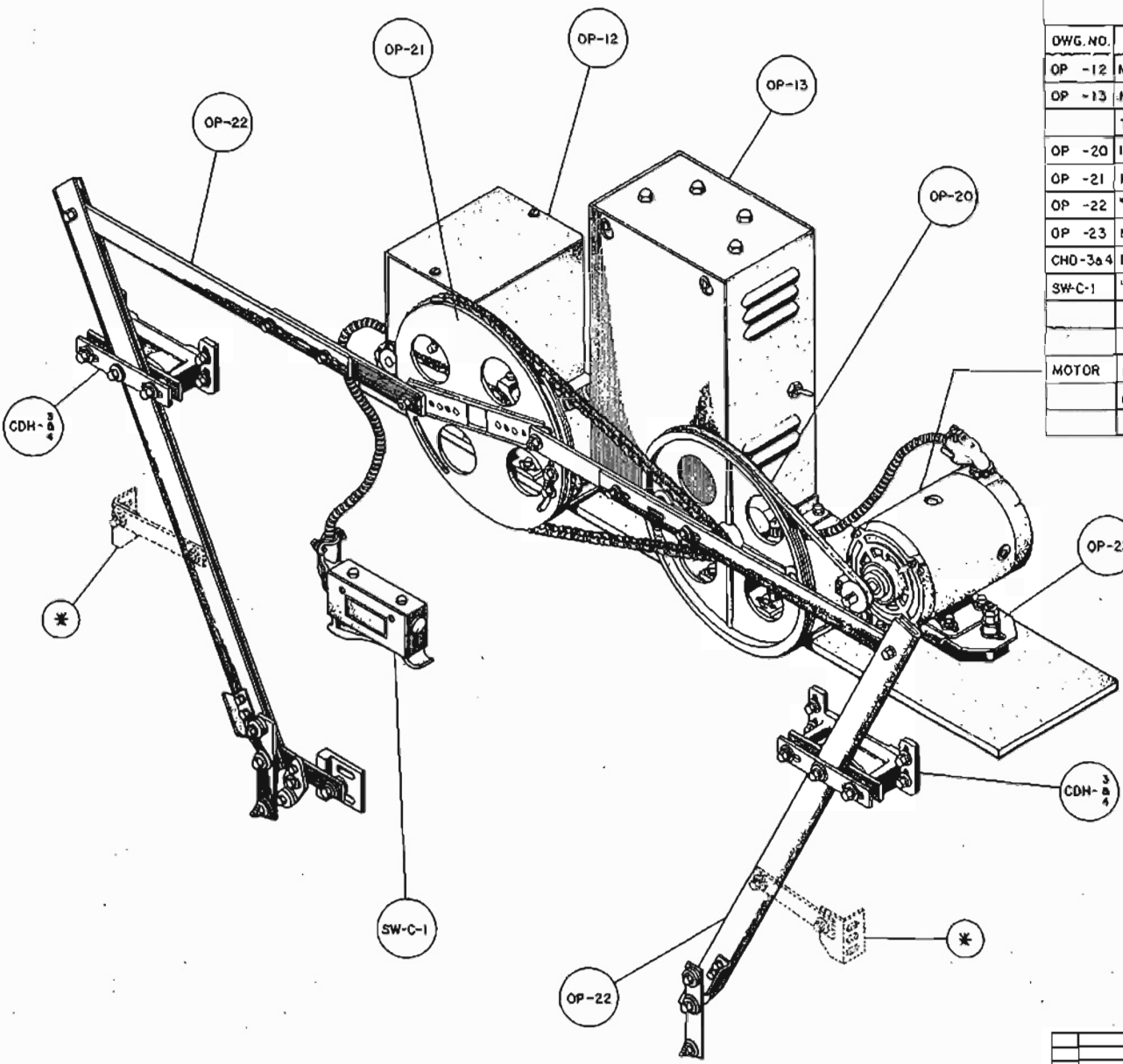
* SLOW DOOR BRACKET & LINK
REQUIRED ON 25P/CP ONLY

NOTE: WHEN ORDERING, REFER TO SPECIFIC
DWG. NO. FOR PARTS REQUIRED.



MODL DOOR OPERATOR
CENTER - PARTING

SCALE	DATE	EL-3-1874
DWG. BY S. C. M.	OP - 2	
CHK. BY G. E. D.		

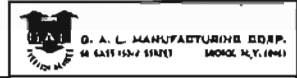


MOML or MOHL DOOR OPERATOR
CENTER PARTING
(PARTS LIST)

DWG. NO.	DESCRIPTION
OP -12	MOM or MOH OPERATOR LIMIT CONTROL
OP -13	MOM or MOH OPERATOR RESISTOR & TERMINAL BOX
OP -20	INTERMEDIATE PULLEY & BEARING BLOCK
OP -21	MOM or MOH DRIVE PULLEY & BEARING BLOCK
OP -22	"L" DRIVE ARM ASS'Y
OP -23	MOTOR MOUNTING BASE
CHD-3&4	DOOR DRIVE ARM SUPPORT
SW-C-1	"G" GATE SWITCH
MOTOR	1/4 HP 220V DC SHUNT WOUND 1140 RPM (MOM)
	1/2 HP 220V DC SHUNT WOUND 1140 RPM (MOH)

* SLOW DOOR BRACKET & LINK
REQUIRED ON 2SP/CP ONLY

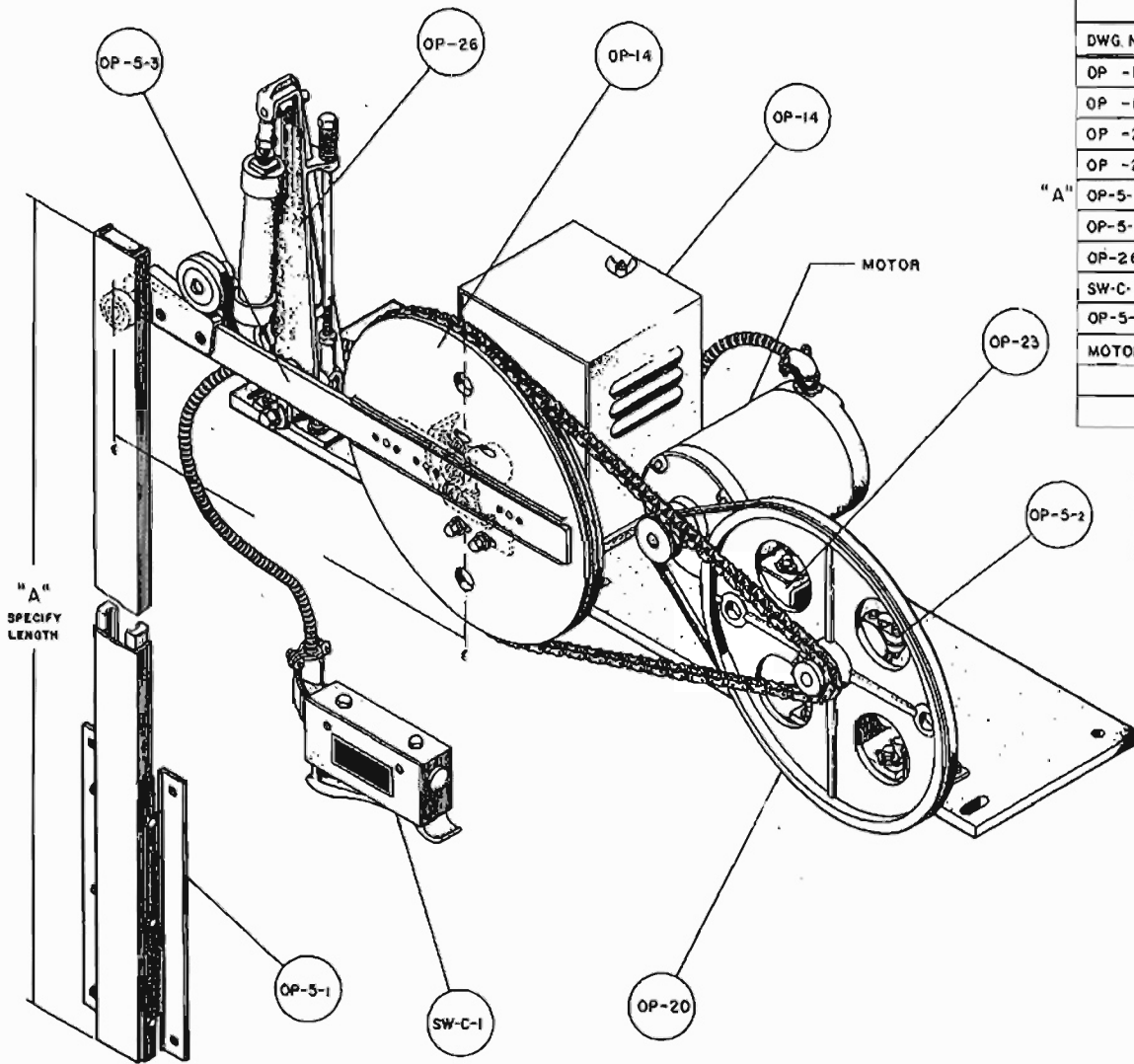
NOTE: WHEN ORDERING, REFER TO
DWG. NO., FOR PARTS REQUIRED.



D. A. L. MANUFACTURING CORP.
64 EAST 152nd STREET
BRONX, N.Y. 10464

MOML or MOHL DOOR OPERATOR
CENTER PARTING

NO	REVISION	DATE	BY	CHKD	SCALE	DATE	12-15-1974
					DWG. BY E. C. H.		
					CHKD BY B. E. D.		
							OP - 4



**MOA DOOR OPERATOR
TWO SPEED or SINGLE SPEED
SLIDING DOORS (PARTS LIST)**

DWG NO	DESCRIPTION
OP -14	MOA OPERATOR LIMIT CONTROL
OP -14	MOA DRIVE PULLEY
OP -20	INTERMEDIATE PULLEY & BEARING BLOCK
OP -23	MOTOR MOUNTING BASE
"A" OP-5-1	AC OPERATOR DRIVE SHOE (SPECIFY LENGTH OF CHANNEL "A")
OP-5-2	FRICTION BRAKE
OP-26	AC OPERATOR OIL CHECK & STAND (OIL CHECK # OC BOX)
SW-C-1	"G" GATE SWITCH
OP-5-3	AC OPERATOR CRANK ARM (ADVISE DOOR OPEN WIDTH)
MOTOR	16 oz / FT. 220V AC 60 CYCLE 3 PHASE 600 R.P.M.

NOTE : WHEN ORDERING, REFER TO SPECIFIC DWG. NO., FOR PARTS REQUIRED.

DISCONTINUED
(PARTS AVAILABLE)



**MOA DOOR OPERATOR
TWO SPEED or SINGLE SPEED
(SLIDING DOORS)**

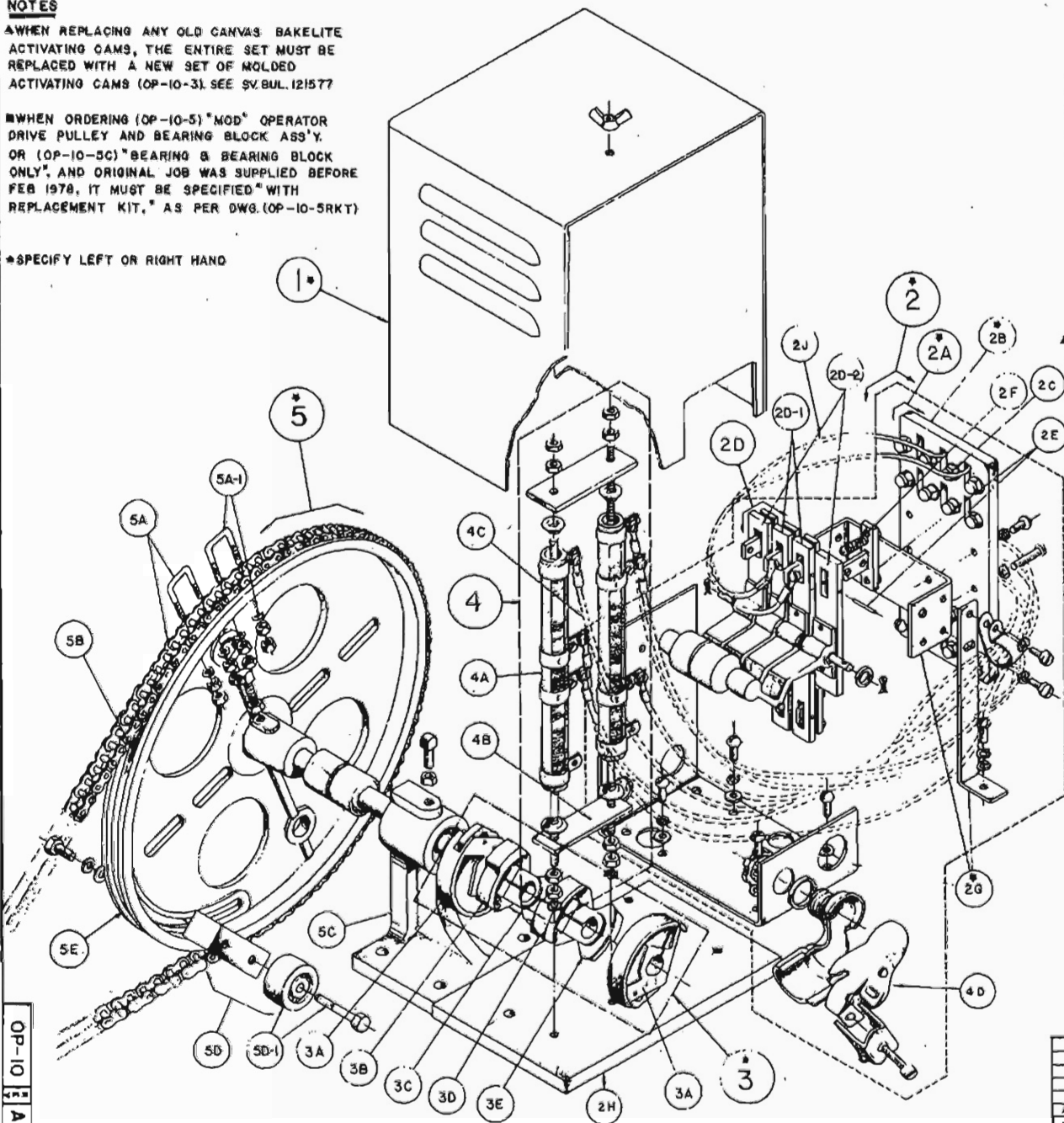
NO	REV	DATE	BY	CHKD	DATE	SCALE	DATE
						1" = 1"	12-15-1974
							OP-5

NOTES

1. WHEN REPLACING ANY OLD CANVAS BAKELITE ACTIVATING CAMS, THE ENTIRE SET MUST BE REPLACED WITH A NEW SET OF MOLDED ACTIVATING CAMS (OP-10-3). SEE SV.BUL.121577

2. WHEN ORDERING (OP-10-5) "MOD" OPERATOR DRIVE PULLEY AND BEARING BLOCK ASS'Y. OR (OP-10-5C) "BEARING & BEARING BLOCK ONLY", AND ORIGINAL JOB WAS SUPPLIED BEFORE FEB 1978, IT MUST BE SPECIFIED "WITH REPLACEMENT KIT," AS PER DWG.(OP-10-5RKT)

3. *SPECIFY LEFT OR RIGHT HAND



"MOD" OPERATOR LIMIT CONTROL (PARTS LIST)

PART NO.	DESCRIPTION
* OP-10	"MOD" OPERATOR LIMIT CONTROL ASS'Y.
* OP-10-1	"MOD" LIMIT BOX COVER & WING NUT
* OP-10-2	"MOD" LIMIT SWITCH (INCLUDES PARTS 2A TO 2J)
OP-10-2A	CONTACT BASE ASS'Y. (INCLUDES PARTS 2B TO 2G)
* OP-10-2B	CONTACT BASE ONLY
OP-10-2C	3/4" SILVER CONTACT SCREWS 3/4" LG.(12-REQD)
OP-10-2D	SET OF BRIDGING CAM ASS'YS. (2) "L" & (2) "S"
OP-10-2D-1	LARGE BRIDGING CAM ASS'Y. "L" (2-REQD)
OP-10-2D-2	SMALL BRIDGING CAM ASS'Y. "S" (2-REQD)
OP-10-2E	BRIDGING CONTACT WITH PIN
OP-10-2F	BRIDGING CONTACT SPRING
* OP-10-2G	"MOD" LIMIT SWITCH MOUNTING BK'T. ASS'Y.
OP-10-2H	"MOD" LIMIT SWITCH MOUNTING PLATE
OP-10-2J	JUMPER WIRES (2) REQ'D.
▲▲ OP-10-3	SET OF ACTIVATING CAMS (INCLUDES 3A TO 3E)
▲ OP-10-3A	#1 LIMIT CAM - LEFT HAND OPERATOR
▲ OP-10-3B	#2 LIMIT CAM - RIGHT HAND OPERATOR
▲ OP-10-3C	#5 CLOSE-1ST AND 2ND SLOW DOWN CAM
▲ OP-10-3C	#4 CLOSE-SLOW START CAM
▲ OP-10-3D	#6 OPEN-1ST AND 2ND SLOW DOWN CAM
▲ OP-10-3E	#3 OPEN-SLOW START CAM
OP-10-4	RESISTOR ASS'Y (INCLUDES PARTS 4A TO 4C)
OP-10-4A	300 OHM 100WATT RESISTOR W/BANDS
OP-10-4B	RESISTOR MOUNTING BRACKETS (INCLUDES ASBESTOS SEPARATOR AND RODS)
OP-10-4C	RESISTOR LEAD WIRES (7-REQD)
OP-10-4D	ANGLE CONNECTOR
* OP-10-5	"MOD" OPERATOR DRIVE PULLEY AND BEARING BLOCK ASS'Y (INCLUDES PARTS 5A TO 5E)
OP-10-5A	CHAIN AND "U" BOLTS
OP-10-5A-1	"U" BOLTS, NUTS & LOCKWASHERS (2-REQD)
OP-10-5B	RUBBER SUPPRESSOR WITH RIVETS
■ OP-10-5C	BEARING WITH BEARING BLOCK
OP-10-5D	"MOD" STOP ROLLER AND BRACKET
OP-10-5D-1	ROLLER & BOLT
OP-10-5E	"MOD" OPERATOR DRIVE PULLEY ONLY

LEFT HAND SHOWN
RIGHT HAND OPPOSITE



"MOD" OPERATOR LIMIT CONTROL (PARTS LIST)

SCALE		DATE JUNE 10 1974	
DWN. BY E. C. H.		OP-10-1A	
NO.	REVISION	DATE	CHKD. BY

OP-10-1A



September 1, 1987

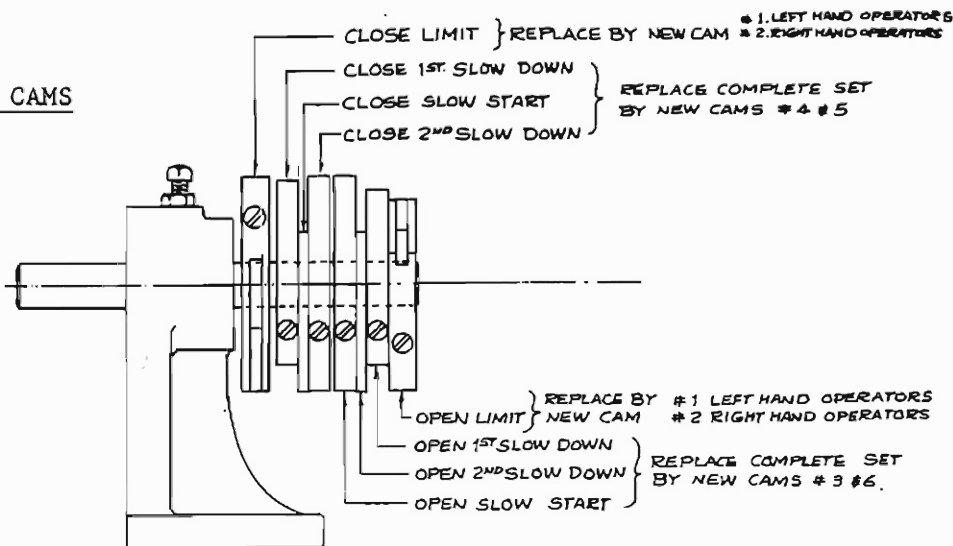
MODL - Door Operator Activating Cam

TO WHOM IT MAY CONCERN:

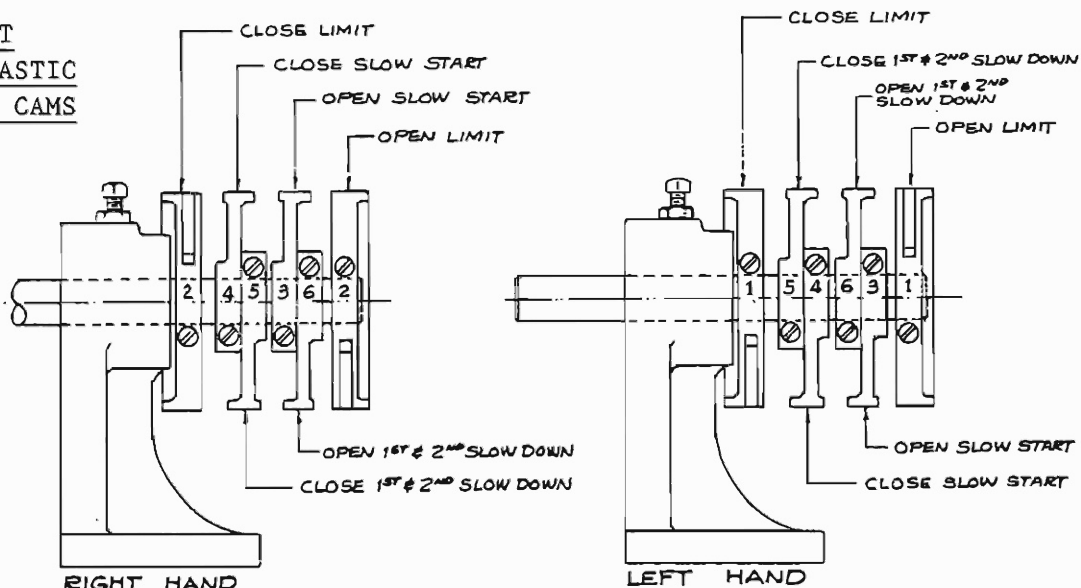
The eight (8) bakelite activating cams used in our power door operator limit control, have been replaced by six (6) moulded plastic activating cams. The shape of the cams have been slightly altered.

When ordering replacement, you would have to advise us the hand of the installation, center-parting installations are always left hand.

BAKELITE ACTIVATING CAMS

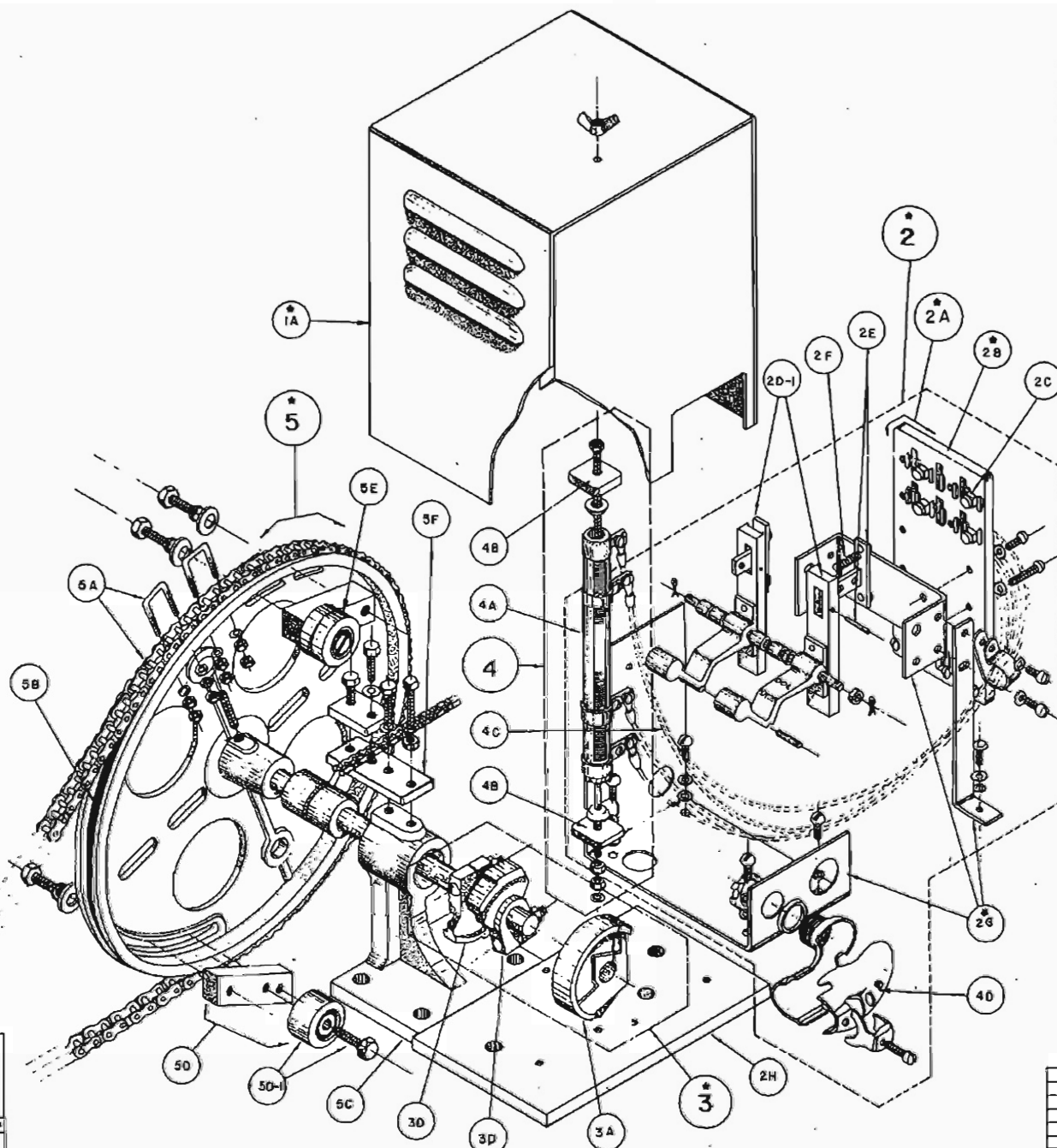


REPLACEMENT MOULDED PLASTIC ACTIVATING CAMS



NOTE: When installing replacement cams it is important to follow diagram as to which cam number and which side of cam goes in first.

"MODP" OPERATOR LIMIT CONTROL
(PARTS LIST)



PART NO.	DESCRIPTION
* OP-11	"MODP" OPERATOR LIMIT CONTROL ASS'Y.
* OP-11-1A	"MODP" LIMIT BOX COVER & WING NUT
* OP-11-2	"MODP" LIMIT SWITCH (INCLUDES PARTS 2B TO 2H)
* OP-11-2A	CONTACT BASE ASS'Y (INCLUDES PARTS 2B & 2C)
* OP-11-2B	CONTACT BASE ONLY
OP-11-2C	3/8" SILVER CONTACT SCREWS 3/4" LG (6 REQ'D)
OP-11-2D	SMALL BRIDGING CAM ASS'Y (2) REQ'D "S"
OP-11-2E	BRIDGING CONTACT WITH PIN
OP-11-2F	BRIDGING CONTACT SPRING
* OP-11-2G	"MODP" LIMIT SWITCH MTD. BKT. ASS'Y.
OP-11-2H	"MOD" LIMIT SWITCH MOUNTING PLATE
* OP-11-3	SET OF ACTIVATING CAMS (3) (INCLUDES 3A & 3B)
OP-11-3A	CLOSE CAM # 1
OP-11-3B	SLOW DOWN CAM # 3
OP-11-3C	OPEN LIMIT CAM # 3
OP-11-4	RESISTOR ASS'Y (INCLUDES PARTS 4A TO 4C)
OP-11-4A	500 OHM 1000 WATT RESISTOR W/BANDS
OP-11-4B	RESISTOR MOUNTING BRACKETS (INCLUDES ASBESTOS SEPARATOR & ROD)
OP-11-4C	RESISTOR LEAD WIRES (4) REQ'D
OP-11-4D	ANGLE CONNECTOR
OP-11-5	"MODP" OPERATOR DRIVE PULLEY AND BEARING BLOCK ASS'Y (INCLUDES 5A TO 5D)
OP-11-5A	CHAIN AND "U" BOLTS
OP-11-5B	RUBBER SUPPRESSOR
OP-11-5C	BEARING AND BEARING BLOCK ONLY
OP-11-5D	MODL STOP RUBBER AND BRACKET
OP-11-5E	ROLLER AND BOLT
OP-11-5F	RETIRING CAM PICK UP ROLLER ASS'Y
OP-11-5F	RETIRING CAM ANCHOR CLAMP

NOTES:

- * SPECIFY LEFT OR RIGHT HAND
- WHEN ORDERING (OP-11-5) "MODP" OPERATOR DRIVE PULLEY AND BEARING BLOCK ASS'Y. OR (OP-11-5C) "BEARING AND BEARING BLOCK ONLY"; AND ORIGINAL JOB WAS SUPPLIED BEFORE FEB. 1978, IT MUST BE SPECIFIED "WITH REPLACEMENT KIT", AS PER DWG. (OP-10-5RKT)
- ▲ WHEN REPLACING ANY OLD CANVAS BAKELITE ACTIVATING CAMS, THE ENTIRE SET MUST BE REPLACED WITH A NEW SET OF MOLDED ACTIVATING CAMS (OP-11-3).

LEFT HAND SHOWN
RIGHT HAND OPPOSITE

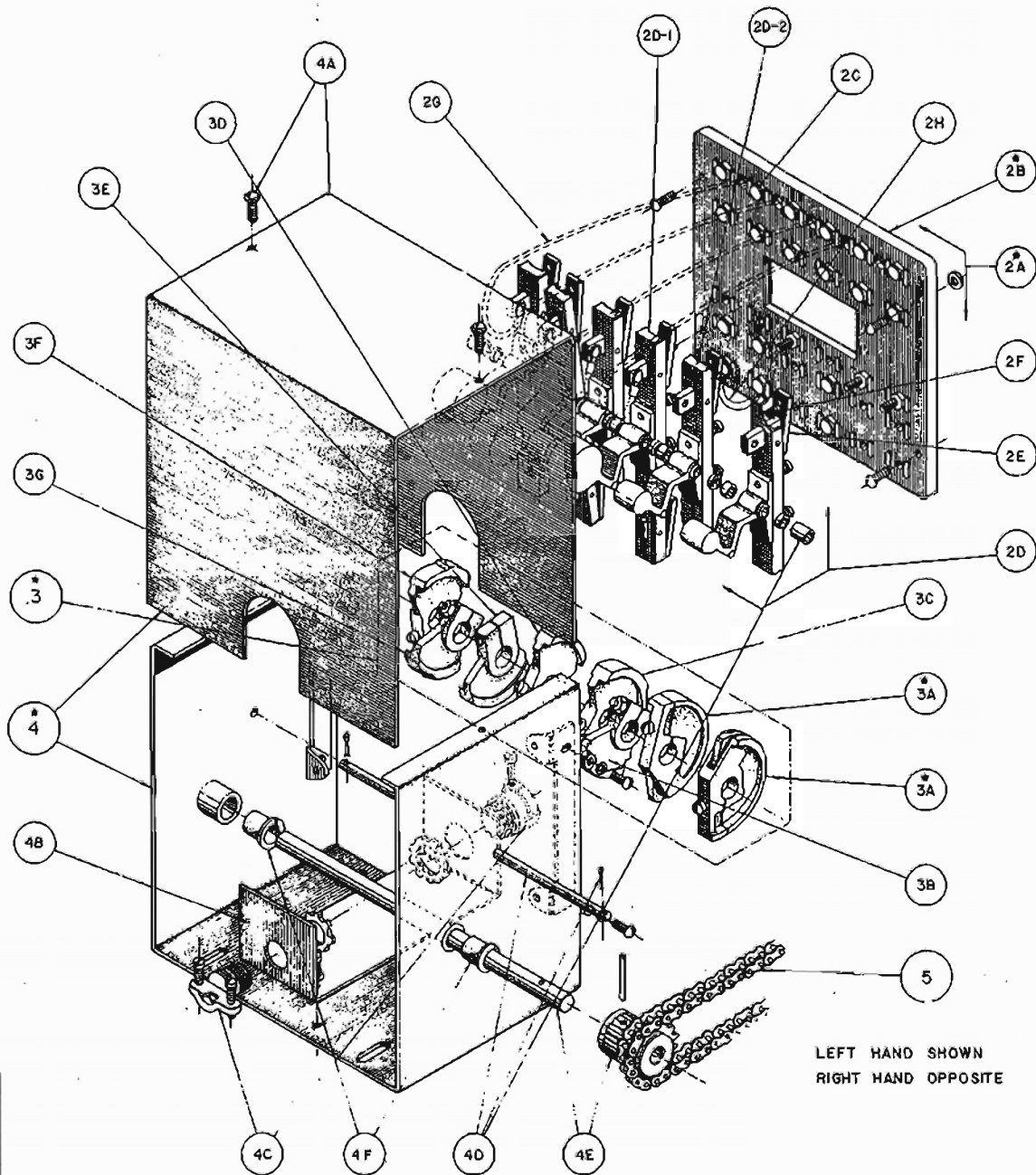


"MODP" OPERATOR
LIMIT CONTROL
(PARTS LIST)

SCALE	HALF	DATE	11-8-83
UP DATED	84-02	DRG BY	WSP/rlz
NO.	REV'D	DATE	CHK. BY

OP-11

OP-11
REV
A



LEFT HAND SHOWN
RIGHT HAND OPPOSITE

"MOM" AND "MOH"
OPERATOR LIMIT CONTROL
(PART LIST)

PART NO.	DESCRIPTION		
* OP-12	MOM & MOH OPERATOR LIMIT CONTROL ASS'Y		
* OP-12-2A	"MOM" & "MOH" MOLDED CONTACT BASE ASS'Y (INCLUDES PART # 2B & 2C) (SPECIFY L.H. OR R.H.)		
* OP-12-2B	CONTACT BASE ONLY (SPECIFY L.H. OR R.H.)		
OP-12-2C	3/8 SILVER CONTACT SCREWS, 3/4" LG. (18 REQ'D)		
OP-12-2D	SET OF BRIDGING CAM ASS'Y (INCLUDES OP-12-2D-1)		
OP-12-2D-1	LARGE BRIDGING CAM ASS'Y "L" (3-REQ'D)		
OP-12-2D-2	SMALL BRIDGING CAM ASS'Y "S" (3-REQ'D)		
OP-12-2E	BRIDGING CONTACT WITH PIN		
OP-12-2F	BRIDGING CONTACT SPRING		
OP-12-2G	DOUBLE JUMPER WIRES (2-REQ'D)		
OP-12-2H	SINGLE JUMPER WIRE (1-REQ'D)		
* OP-12-3	SET OF ACTIVATING CAMS (INCLUDES ITEM 3A TO 3G)		
		LH	RH
* OP-12-3A	CLOSE LIMIT CAM #1	#1	#2
* OP-12-3B	OPEN LIMIT CAM #1	#1	#2
* OP-12-3B	SLOW START CAM #4	#4	#4
* OP-12-3C	1st & 2nd SLOW DOWN CAM #7	#7	#7
* OP-12-3D	3rd & 4th SLOW DOWN CAM #4	#4	#3
* OP-12-3E	1st & 2nd SLOW DOWN CAM #7M	#7M	#7M
* OP-12-3F	FINISH SLOW DOWN CAM #3	#3	#4
* OP-12-3G	SLOW START CAM #3	#3	#4
* OP-12-4	MOM & MOH LIMIT BOX & COVER (INCLUDES PARTS OP-12-4A TO 4F)		
OP-12-4A	COVER & SCREWS		
OP-12-4B	8X CONNECTOR MOUNTING BRACKET		
OP-12-4C	8X CONNECTOR (2-REQ'D)		
OP-12-4D	BRIDGING CAM SHAFT & COTTER PINS & SPACERS		
OP-12-4E	ACTIVATING CAM SHAFT & SPROCKET		
OP-12-4F	NYLINER BUSHING # 10L, 10F (2 REQ'D)		
OP-12-5	ACTIVATING CAM DRIVE CHAIN		

NOTES:

▲ WHEN REPLACING ANY OLD CANVAS BAKELITE ACTIVATING CAMS, THE ENTIRE SET MUST BE REPLACED WITH A NEW SET OF MOLDED ACTIVATING CAMS (OP-12-3). SEE SV BUL. 121577-A

* SPECIFY LEFT OR RIGHT HAND



G. A. L. MANUFACTURING CORP.
50 EAST 134th STREET
BRONX, N. Y. 10451

MOM AND MOH
OPERATOR LIMIT CONTROL

A	MP	DATED	D	REV.	BY	S	C	H.	DATE	JUNE 29 1974	REV.
NO.	REV.	DATE	BY	CHK.	BY	S	C	H.	DATE	JUNE 29 1974	REV.

OP-12
1
A



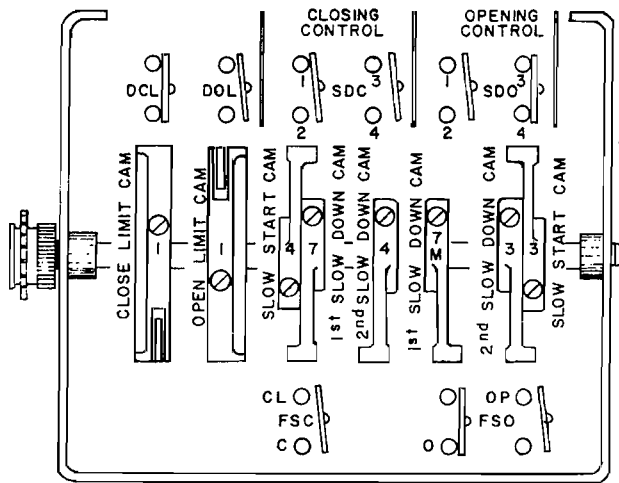
December 15, 1977

MOML - DOOR OPERATOR ACTIVATING CAM

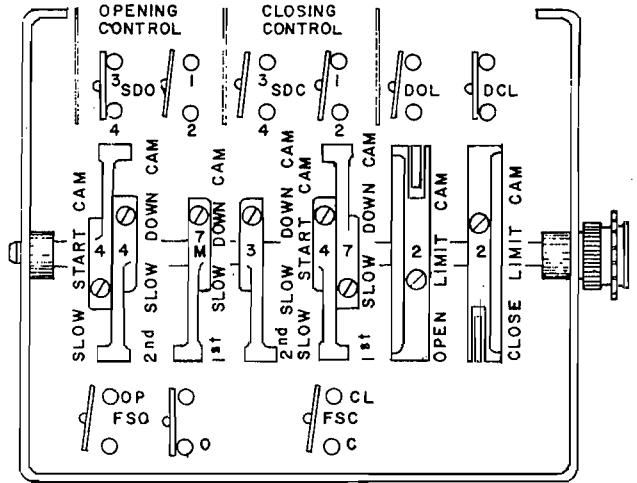
TO WHOM IT MAY CONCERN:

The eleven (11) bakelite activating cams used in our power door operator limit control, have been replaced by eight (8) moulded plastic activating cams. The shape of the cams has been slightly altered.

When ordering replacement, you would have to advise us the hand of the installation. Center-parting installations are always left hand.



LEFT HAND

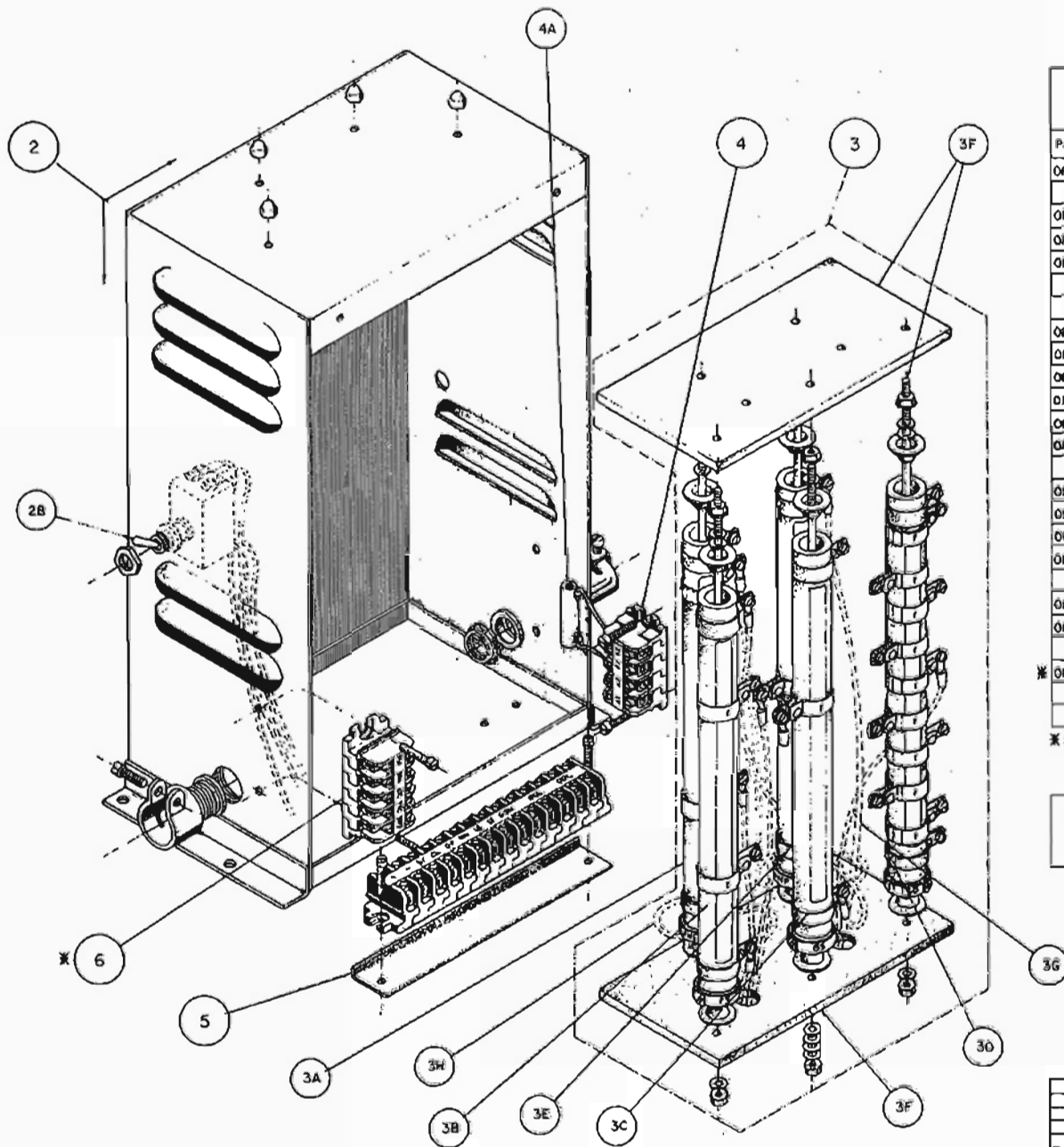


RIGHT HAND

NOTE: When installing replacement cams, it is important to follow diagram as to which cam number and which side of cam goes on first. By reversing the position of the cam (side of cam that goes on first), the following substitutions can be made:

- Cam #3 for Cam #4 and vice-versa
- Cam #1 for Cam #2 and vice-versa

At times G.A.L. makes such substitutions in original assembly.

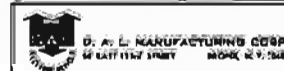


MOM & MOH
OPERATOR RESISTOR AND TERMINAL BOX
(PART LIST)

PART NO.	DESCRIPTION	
OP-13-1	MOM & MOH OPERATOR RESISTOR AND TERMINAL BOX	
OP-13-2	RESISTOR BOX & COVER	
OP-13-2A	COVER AND SCREWS (NOT SHOWN)	
OP-13-2B	ON-OFF TOGGLE SWITCH	
OP-13-3	RESISTOR ASSY(
OP-13-3A	"L" LINE RESISTOR TUBE 2 BANDS	
OP-13-3B	"F" FAST SPEED RESISTOR 2 BANDS	100 OHM 200 WATT
OP-13-3C	"B" BASIC SPEED RESISTOR 1 BAND	
OP-13-3D	"S" SLOW DOWN RESISTOR 9 BANDS	
OP-13-3E	"DMF" MOTOR FIELD RESISTOR	750 OHM 200 WATT 1 BAND
OP-13-3F	RESISTOR MTG. BRACKETS (INCLUDES ASSEMBLY INSTRUCTIONS & PEGS)	
OP-13-3G	RESISTOR LEADS	
OP-13-3H	JUMPER WIRES	
OP-13-4	OPERATOR MOTOR TERMINAL BLOCK AND RESISTOR	
OP-13-4A	8K OHM 20WATT RESISTOR	
OP-13-5	CONTROLLER TERMINAL BLOCK (14) AND MOUNTING PLATE	
* OP-13-6	ATTENDANT TERMINAL BLOCK (8)	

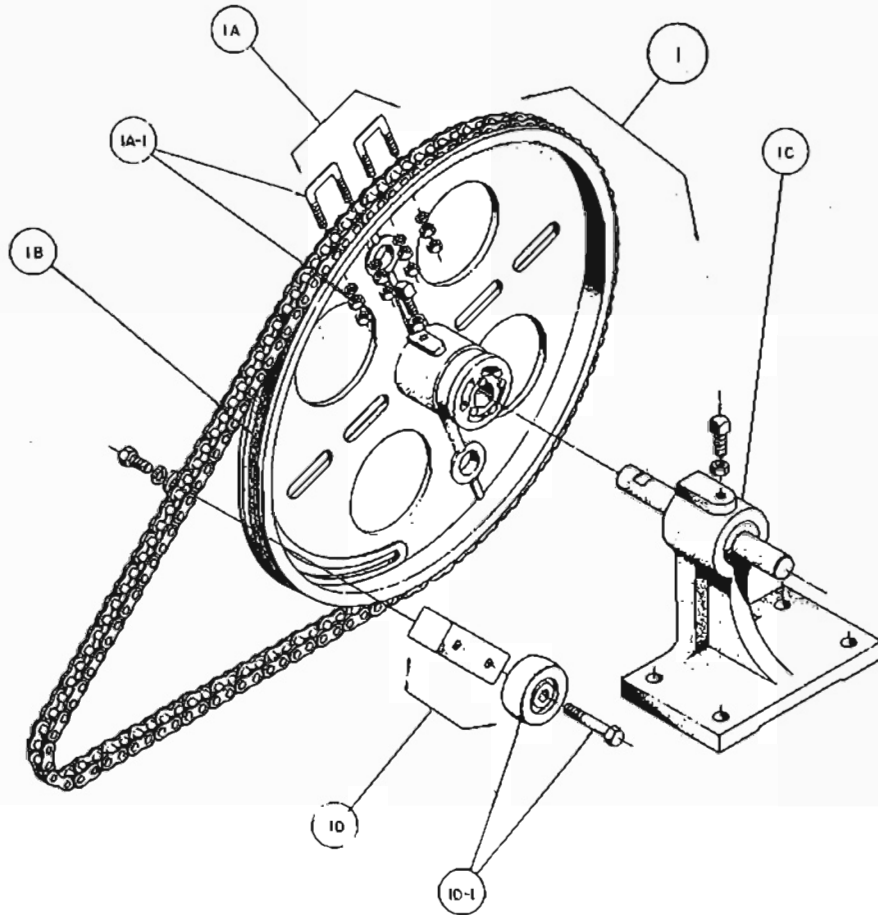
* SUPPLIED ONLY WHEN "ATTENDANT FEATURE" REQ'D.

NOTE: WHEN ORDERING SPECIFY THIS DRAWING NUMBER, PART NUMBER AND DESCRIPTION.



MOM AND MOH OPERATOR
RESISTOR AND TERMINAL BOX

NO.	REVISED	DATE	BY	CHKD.	DATE	SCALE	FIGS.	DATE	APPROV.
1		7-78							
								OP-13	

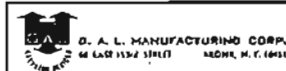


MOM & MOH DRIVE PULLEY
& BEARING BLOCK ASS'Y
(PARTS LIST)

PART NO.	DESCRIPTION	
OP-21-1	MOM & MOH DRIVE PULLEY (INCLUDES PARTS 1A TO 1B)	
OP-21-1A	CHAIN & U BOLTS	
OP-21-1A-1	U BOLTS, NUTS & LOCKWASHERS (2)	
OP-21-1B	RUBBER SUPPRESSOR	
OP-21-1C	BEARING WITH BEARING BLOCK	
OP-21-1D	STOP ROLLER & BRACKET	
OP-21-1D-1	ROLLER & BOLT	

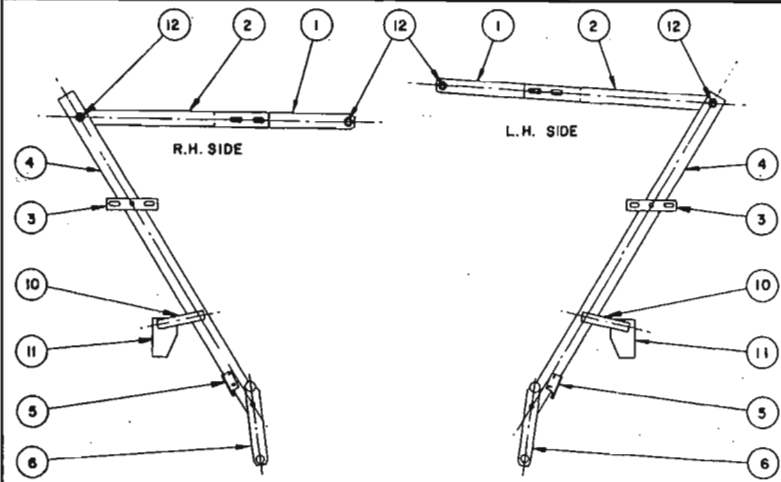
NOTE: WHEN ORDERING SPECIFY THIS DWG. NO.,
PART NUMBER, DESCRIPTION AND HAND.

L.H. SHOWN
R.H. OPPOSITE AS SHOWN

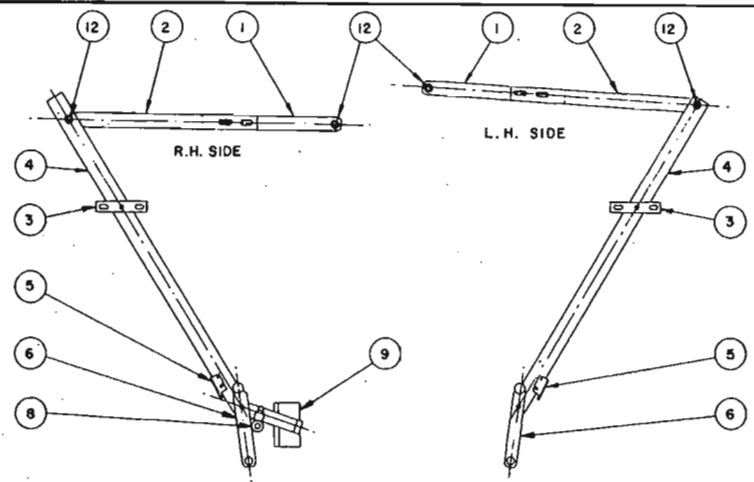


MOM & MOH DRIVE PULLEY
& BEARING BLOCK ASS'Y
(PARTS LIST)

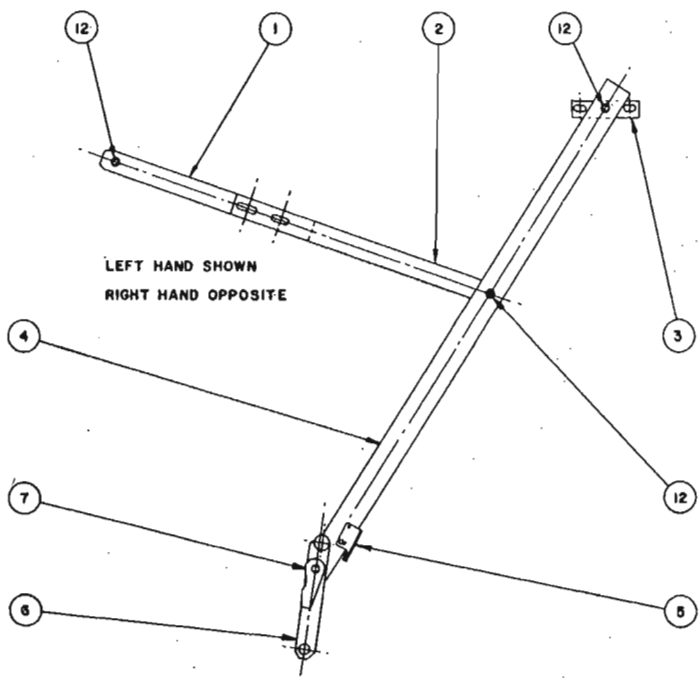
SCALE		DATE 12-18-1974	
1	MR. SALES	7-78	DWG BY S. C. H.
10	ACVISION	DATE	CHEK BY G. F. D.
			OP-21



TYPE "L" 2/SP-C/P OPERATOR DOOR DRIVE ARM ASS'Y SET
(SEE DATA TABLE IX)



TYPE "L" C/P OPERATOR DOOR DRIVE ARM ASS'Y SET
(SEE DATA TABLE III)



TYPE "L" S/S OR 2/SP OPERATOR DOOR DRIVE ARM ASS'Y
(SEE DATA TABLE I OR II)

HOW TO ORDER

- A.) IF COMPLETE DRIVE ARM ASS'YS ARE BEING ORDERED, SPECIFY AS INDICATED UNDER COMPLETE ASS'Y DETAIL ALONG WITH THE FOLLOWING:
- CLEAR OPENING WIDTH
 - HAND OF OPENING (IF S/S OR 2/SP)
 - ORIGINAL CONTRACTOR & G.A.L. JOB NO. IF AVAILABLE
- B.) IF INDIVIDUAL PARTS ARE REQ'D SPECIFY AS FOLLOWS:
- QTY, ITEM NO., TYPE, DESCRIPTION, AND HAND (RIGHT OR LEFT)
- IF LINKS OR ARMS ARE BEING ORDERED, THE FOLLOWING MUST ALSO BE INCLUDED:
- CLEAR OPENING WIDTH
 - CENTER LINE DIMENSION OF LINK OR ARM (SEE TABLES I, II, III, OR IX ATTACHED)
- C.) IF ANY LINKS OR ARMS HAVE A CENTER LINE DIMENSION DIFFERENT FROM THE TABLES, YOU MUST INDICATE THE ORIGINAL CONTRACTOR AND G.A.L. JOB NO.

OP-22-12	6179	BEARING		
OP-22-11	"L" 2/SP C/P	OPERATOR SLOW DOOR BRACKET RIGHT OR LEFT HAND		
OP-22-10	"L" 2/SP C/P	OPERATOR SLOW DOOR LINK		
OP-22-9	"L" C/P	OPERATOR DOOR BRACKET AND LINK ASS'Y RIGHT HAND		
OP-22-8	"L"	OPERATOR SAFETY EDGE CLOSE ROLLER ASS'Y		
OP-22-7	"L"	OPERATOR SAFETY EDGE OPEN HOLD FRICTION ASS'Y RIGHT OR LEFT HAND		
OP-22-6	"L"	OPERATOR SAFETY EDGE ACTUATING LINK ASS'Y RIGHT OR LEFT HAND		
OP-22-5	"L"	OPERATOR SAFETY EDGE OPEN CAM R.O.R.L. HAND		
OP-22-4	"L"	OPERATOR ALUMINUM DOOR DRIVE ARM		
OP-22-3	"L"	OPERATOR DRIVE ARM CROSS PLATE		
OP-22-2	"L"	OPERATOR CONNECTING LINK (LOWER SECTION)		
OP-22-1	"L"	OPERATOR CONNECTING LINK (UPPER TAPPED SECTION)		
PART NO.	TYPE	DESCRIPTION	LIST PRICE	

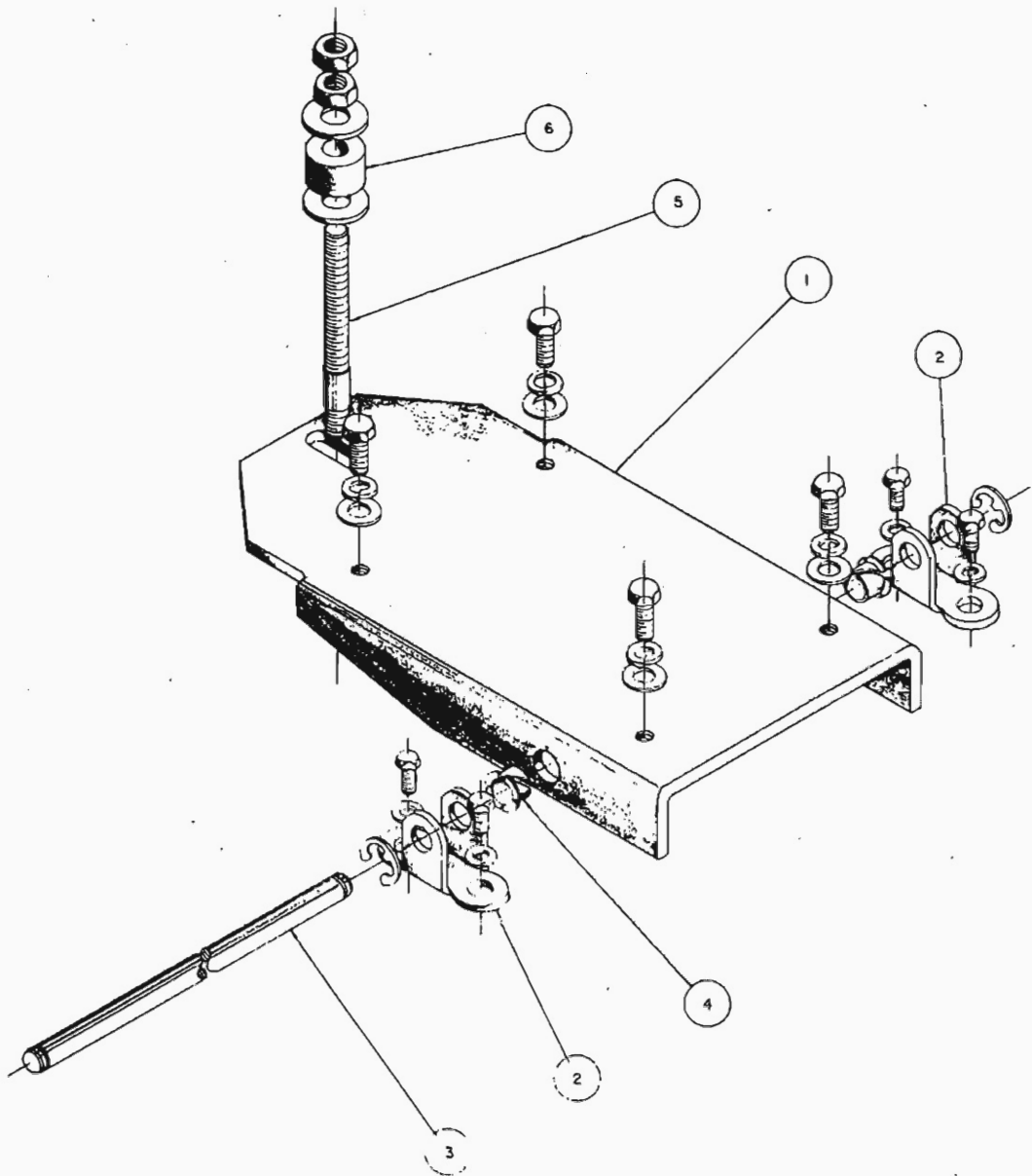
PARTS LIST



TYPE "L" OPERATOR DOOR DRIVE ARM ASS'YS

SCALE		DATE 10-1-75	
1 MIN. SALES		DWG. BY S. ADLER	
NO.	REVISION	DATE	CHK. BY T. C. O.
			OP-22


10-1170-000-1



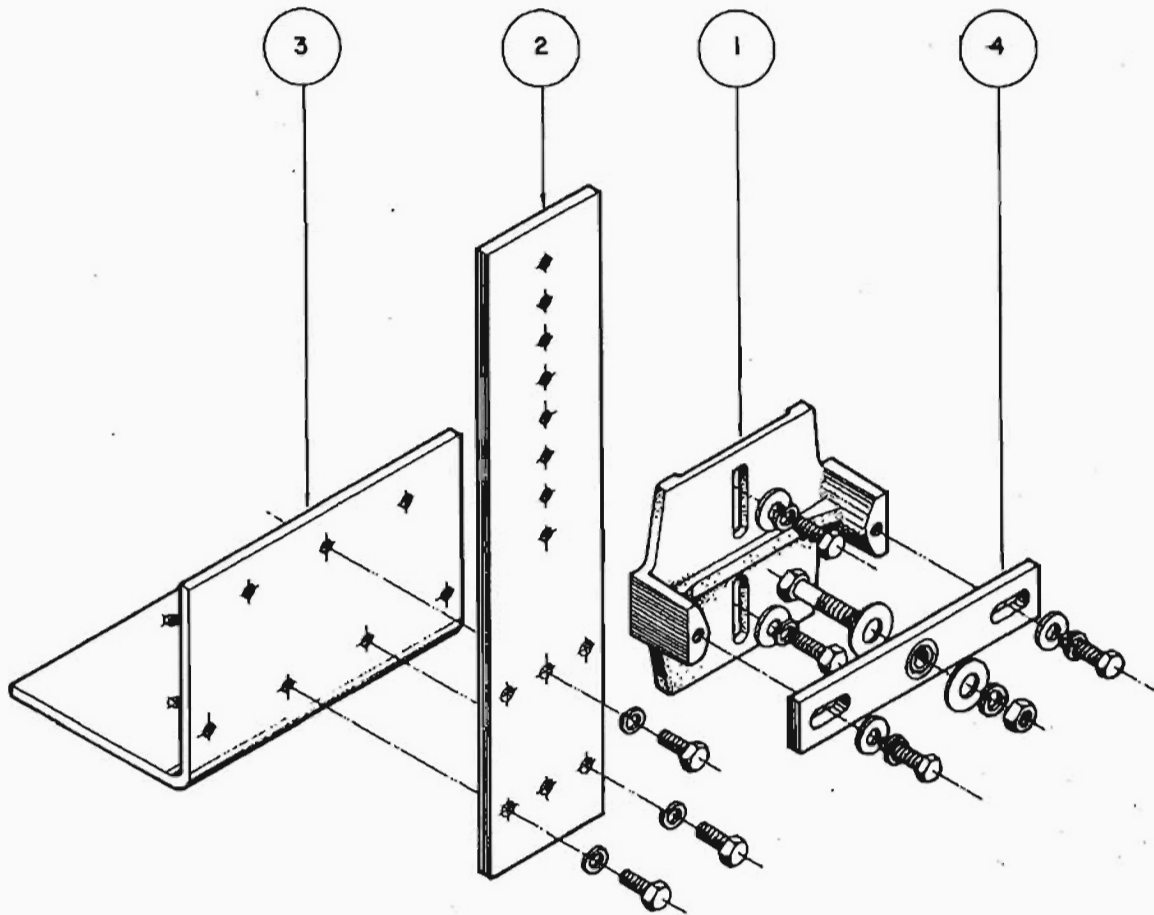
**OPERATOR MOTOR MOUNTING BASE
(PARTS LIST)**

PART NO.	DESCRIPTION	
OP-23-1	MOTOR MOUNTING BASE	
OP-23-2	MOTOR MOUNTING BASE HINGE PIN (2)REQ'D	
OP-23-3	MOTOR MOUNTING HINGE PIN WITH "E" RING	
OP-23-4	NYLINER BUSHING (2) REQ'D	
OP-23-5	MOTOR MOUNTING BASE GUIDE STUD WITH NUTS AND WASHERS	
OP-23-6	MOTOR MOUNTING BASE GUIDE BUMPER	

NOTE : WHEN ORDERING SPECIFY THIS DRAWING NUMBER, PART NUMBER AND DESCRIPTION.


G. A. L. MANUFACTURING CORP.
 50 EAST 154th STREET
 BOSTON, N. Y. 10511

		SCALE	FULL	DATE	11-15-1974		
1	MIN. SALES	7-78	EMG BY	S	C	H	
NO.	REVISION	DATE	CHK	CHK BY	C	F	D
OPERATOR MOTOR MOUNTING BASE						OP-23	



DOOR DRIVE ARM SUPPORT TWO SPEED or SINGLE SPEED (PARTS LIST)		
ITEM NO	DESCRIPTION	
1	DRIVE ARM SUPPORT BRACKET 2/SP or S/SP	
2	ADJUSTABLE MOUNTING PLATE	
3	MOUNTING ANGLE	
4	OPERATOR DRIVE ARM CROSS PLATE	


GAL G. A. L. MANUFACTURING CORP.
 50 EAST 151st STREET BRONX, N. Y. 10451

				DOOR DRIVE ARM SUPPORT TWO SPEED OR SINGLE SPEED (PARTS LIST)	
		SCALE		DATE 7-1-83	
		DWG. BY WSP/raj			
NO.	REVISION	DATE	CHK.	CHK. BY S.F. DOLAN	OP - 24

