
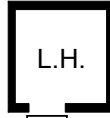





**MOVFF HARMONIC DOOR OPERATING EQUIPMENT ESTIMATE/ORDER FORM**

From: \_\_\_\_\_ Sheet \_\_\_\_\_ of \_\_\_\_\_  
 Customer \_\_\_\_\_ Phone \_\_\_\_\_ Date \_\_\_\_\_  
 Requested by \_\_\_\_\_ Fax \_\_\_\_\_ Date reqd. \_\_\_\_\_  
 Customer Address \_\_\_\_\_ Job No. \_\_\_\_\_ Estimate # \_\_\_\_\_  
 \_\_\_\_\_ Ship To \_\_\_\_\_ Purchase order # \_\_\_\_\_  
 Job name \_\_\_\_\_ Car # \_\_\_\_\_

DOOR OPENING \_\_\_\_\_ x \_\_\_\_\_  
 WIDTH HEIGHT

Right Hand  Left Hand  Center Parting  
    
 S/S  2/SP  3/SP  SS/CP  2SP/CP

New Installation  Modernization (provide survey sheets)  Comply with Code \_\_\_\_\_  
 Advise Existing Door Equipment Mfg \_\_\_\_\_

QTY	PRODUCT	
_____	MOVFR HARMONIC <b>(Includes Drive Arm(s) &amp; Gate Switch)</b>	
	HEADER HEIGHT _____ (Distance from Top of Car Door to Operator Support)	
_____	GATE SWITCH ROLLER & ARM (SW1-005N)	Required
_____	115V DRIVE	Required
_____	HAND-HELD PARAMETRE TOOL	Required
_____	CAN BUS	Required

\_\_\_\_\_ **OTHER OPERATOR** MODEL \_\_\_\_\_ (Includes Drive Arm(s) & Gate Switch)  
 220vdc motor 115vdc motor (MOH not available)  
 For CT type operators supply door open & door close relay voltage:  
 240VAC  120VAC 110VDC Other \_\_\_\_\_  AC DC

_____	CAR DOOR HANGER (Includes header, track, and hangers)	
_____	CAR DOOR CLUTCH	GAL ECI _____ RUNNING CLEARANCE with zone lock without zone lock _____ SILL SPACING
_____	INFRARED CURTAIN	GAL ScanGuard + U5 Chip - w/o nudging Formula System + U5 Chip - w/o nudging GAL ScanGuard - w/ nudging/power supply Formula System - w/ nudging/power supply
_____	HATCH DOOR HANGER (Includes tracks and hangers)	( ) R.H. ( ) L.H.
_____	DOOR CLOSER	Spring (linkage) Reel (spirator) S/S & C/P Doors only
_____	INTERLOCK (Includes Roller Release)	GAL ECI ( ) R.H. ( ) L.H.
_____	EMERGENCY UNLOCKING KEY	INT1H-0034N
_____	ESCUTCHEONS	1.5" X 0.5" Dia. 2.0" X 0.5" Dia. 2.75" X 0.5" Dia.
_____	KEY BOX	Stainless Steel Muntz Metal Flush Mounted Surface Mounted #4 Satin #8 Mirror
_____	CLUTCH PLATE 8" X 16"	PICK UP PLATE 8" X 6"
_____	KEEPER PLATE 10 3/4" x 3 1/4"	ADJUSTABLE LOCK MOUNTING BRACKET (4C)

Cab Mfg:  New  Existing Entrance Mfg:  New  Existing Controller Mfg:  New  Existing



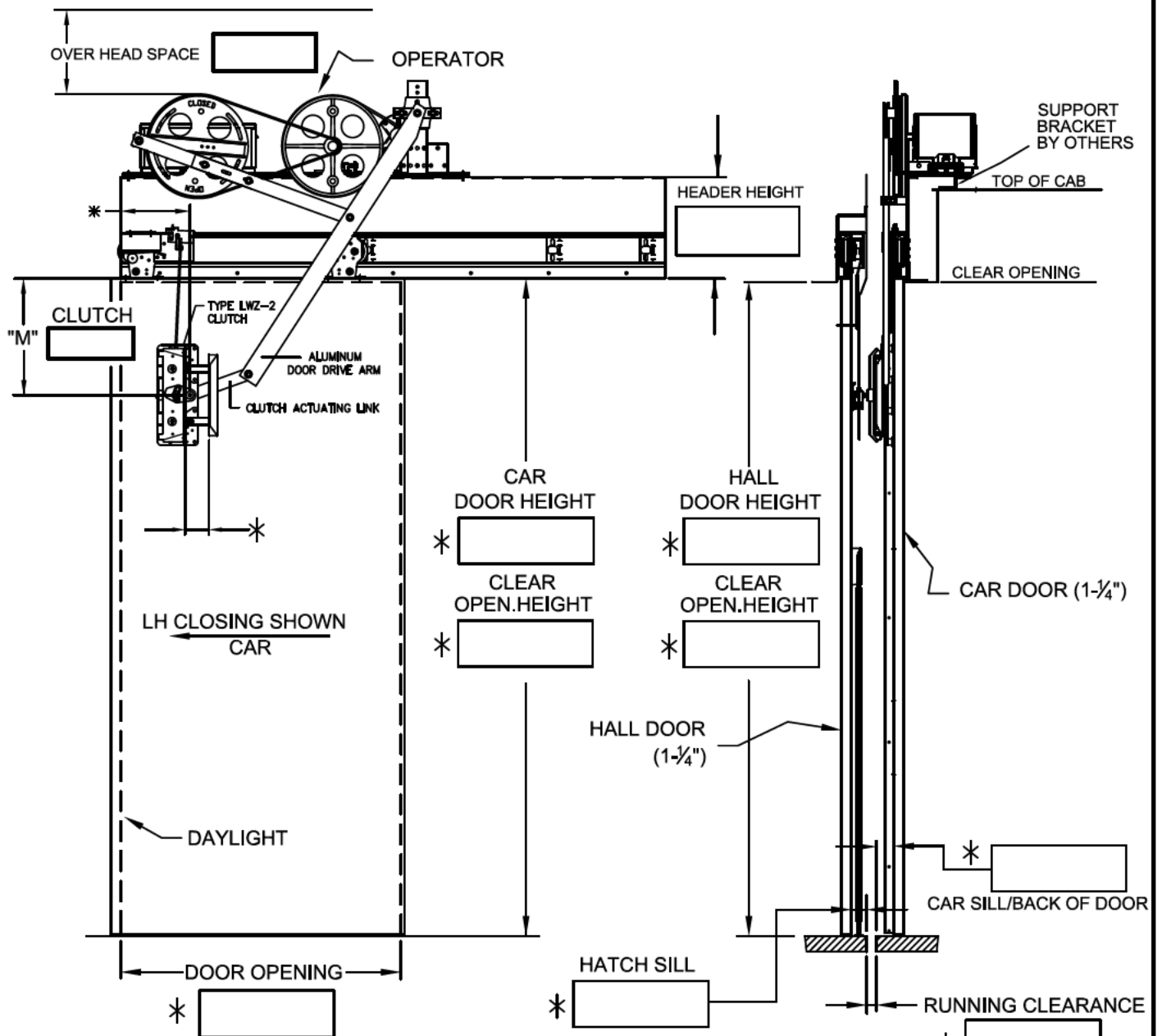
GAL CANADA ELEVATOR PRODUCTS

6500 GOTTARDO CRT, MISSISSAUGA, ONT. L5T 2A2  
TEL: 416-747-7967... FX: 416-747-9035  
TEL: 1-888-425-2262

# MOVFR HARMONIC OPERATOR ORDER FORM

CLOSING AS VIEWED FROM HALL DETERMINES HAND.

▲ HEADER HEIGHT=DISTANCE FROM CLEAR OPENING TO BASE OF OPERATOR



**NOTE!! SILL DIM'S FROM BACK OF DOOR** \*

CUSTOMER.....  
P.O.#.....  
G.A.L. #.....  
JOB NAME.....  
CAR #.....  
CONTACT INFO.....

## OPERATOR TYPE

- # 1 MOVFR II HEAVY DUTY DOOR OPERATOR,CLOSED-LOOP .....
- # 2 MODL II HEAVY DUTY DOOR OPERATOR,CLOSED-LOOP .....

FOR HEADER HEIGHTS - SEE GAL DATA SHEETS SSL=13" INCREASES BY 4" INCREMENTS UP TO 41"  
FOR HEADER HEIGHTS - SEE GAL DATA SHEETS 2-SPD.=13" INCREASE BY 4" INCREMENTS UP TO 41"  
FOR HEADER HEIGHTS - SEE GAL DATA SHEETS C/P=15" INCREASE BY 4" INCREMENTS UP TO 41"

www.galcanada.com